



Washington State
Liquor and Cannabis Board

Measuring Plant Canopy

For Washington State Cannabis Producers

Version 1.1 – April 2023

Defining Plant Canopy

Laws and Rules

WAC 314-55-010 defines plant canopy as the square footage dedicated to live plant production, such as maintaining mother plants, propagating plants from seed to plant tissue, clones, vegetative or flowering area. Plant canopy does not include areas such as space used for the storage of fertilizers, pesticides, or other products, quarantine, office space, etc.

WAC 314-55-075 (6) states the maximum amount of space for cannabis production cannot exceed the amount licensed. Applicants must designate on their operating plan the size category of the production premises and the amount of actual square footage in their premises that will be designated as plant canopy. There are three categories as follows:

- (a) Tier 1 – Less than four thousand square feet;
- (b) Tier 2 – Four thousand square feet up to ten thousand square feet; and
- (c) Tier 3 – Ten thousand square feet up to thirty thousand square feet.

Further Clarification

“Plant Canopy” includes:

The space between plants that allow:

- Airflow
- Light
- Growth
- Access for watering
- Trimming

Dedicated clone and mother plant production areas.

Dedicated plant production areas including pathways, walkways and empty space between rows.

Plant propagation that occurs in a multiple level structure, each level will be calculated as part of the total canopy allowed for the location.

“Plant Canopy” does not include:

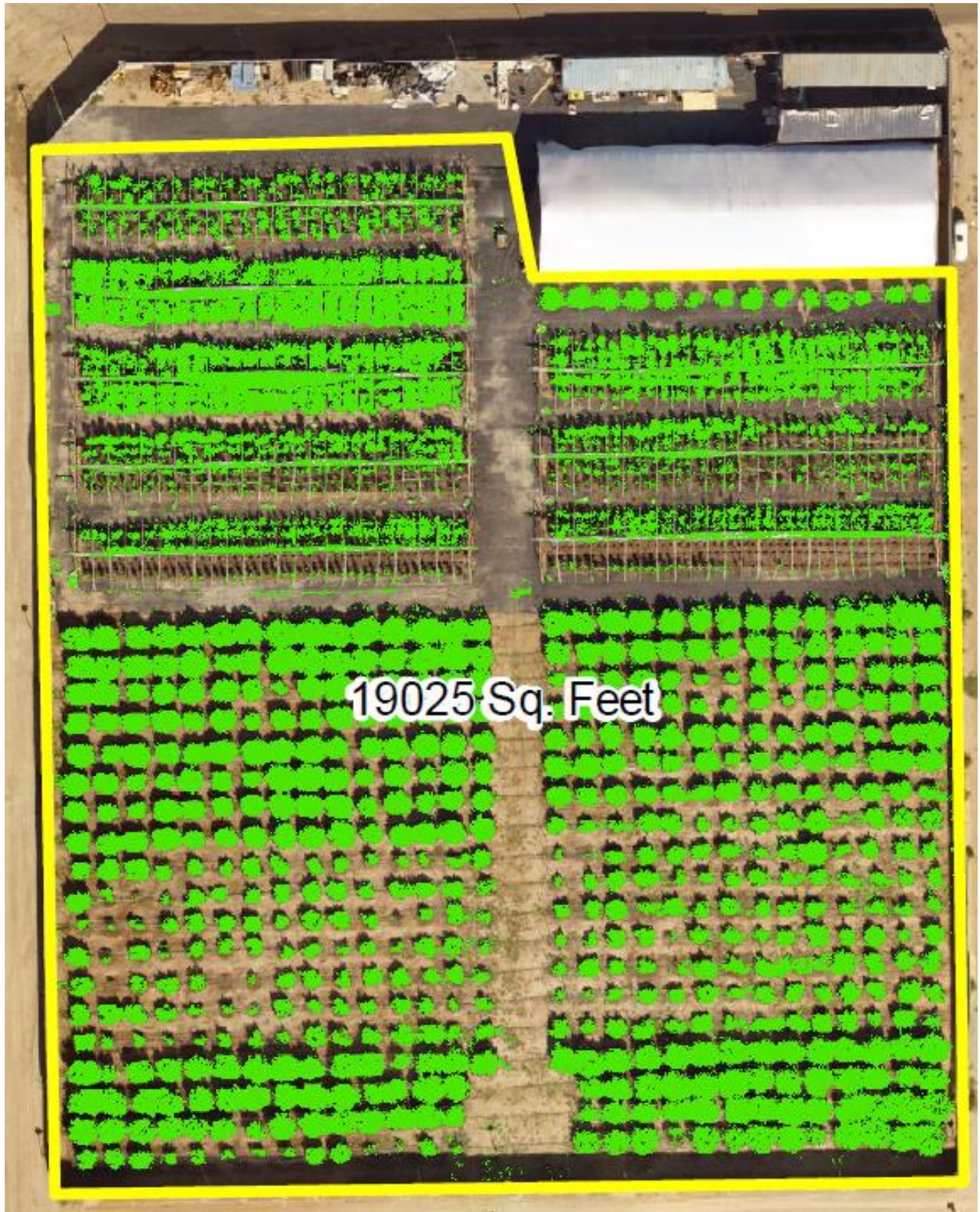
Vehicle access roads.

Completely fallow areas where no cannabis plant propagation or growth is occurring.

Examples

Arial Examples of how Canopy is measured:





19025 Sq. Feet



Examples of space between plants that count as canopy:



Making Changes to Designated Canopy

Small changes to floor plans such as changing designated growing space, can be approved quickly through a new process with the LCB's Licensing Customer Service team.

The form can be accessed at <https://lcb.wa.gov/mjlicense/cannabis-licensing>. **There is no fee associated with these changes.**

Contact LCB Enforcement and Education about Canopy

Growing over the allotted canopy for a license can result in an Administrative Violation and destruction of plants.

If you have questions regarding plant canopy, please contact your local Cannabis Compliance Consultant so that they can provide education and discuss plant canopy limits. You can also review the LCB Interpretive Statement for a more detailed explanation of canopy at [Interpretive Statements | Washington State Liquor and Cannabis Board](#).

If you do not know who your Consultant or Officer is, you can call Enforcement and Education Customer Service at **360-664-9878** or email at **EnfCustomerService@lcb.wa.gov**