

Everett Police Department

Chief of Police: Dan Templeman



Alcohol Impact Area

Five Year Report

September 1, 2017—August 31, 2022

WAC 314-12-215 (8)



TO: Washington State Liquor and Cannabis Board
Licensing Division
3000 Pacific Ave, SE
PO Box 43075
Olympia, WA 98504-3075

In accordance with Washington Administrative Code 314-12-215, the City of Everett and the Everett Police Department hereby submit the following information to evaluate the City of Everett's Alcohol Impact Area (AIA). The City of Everett's AIA was officially approved and implemented by the Washington State Liquor and Cannabis Board on October 22, 2016.

This report will analyze five years of data covering the following time frame: September 1, 2017 through August 31, 2022. As with our original AIA application, the data was collected from the Everett Fire Department to complete this report. The following categories were used to collect data from Everett Fire Department's sources:

- Alcohol containers / paraphernalia at the scene
- Patient admits to alcohol use
- Positive level known from law enforcement or hospital records
- Smell of alcohol on the subject's breath

As indicated above, this report will review five years of data starting on September 1, 2017. The data was broken down into yearly increments, five 12-month periods, to compare and assess changes in the locations of alcohol incidents year over year. The 12-month period, for each year, will run September 1st - August 31st.

- Year 1: September 1, 2017 - August 31, 2018
- Year 2: September 1, 2018 - August 31, 2019
- Year 3: September 1, 2019 - August 31, 2020
- Year 4: September 1, 2020 - August 31, 2021
- Year 5: September 1, 2021 - August 31, 2022

In addition to analyzing the data on yearly basis, the incidents were mapped for geospatial analysis inside and outside of the designated Alcohol Impact Area.



The following table presents the total number of alcohol related incidents, by year, both inside and outside the City of Everett’s AIA.

	Year 1	Year 2	Year 3	Year 4	Year 5
Location	09/01/17-08/31/18	09/01/18-08/31/19	09/01/19-08/31/20	09/01/20-08/31/21	09/01/21-08/31/22
Inside AIA	590	583	471	481	429
Outside AIA	485	442	425	503	558
City of Everett	1075	1025	896	984	987

During the last five years, we see an overall decrease in the number of alcohol related incidents within the City of Everett’s Alcohol Impact Area.

Years Compared	1st Year’s Inside Total	2nd Year’s Inside Total	% Change Inside AIA
Year 1 to Year 2	590	583	1.2% Decrease
Year 2 to Year 3	583	471	19.2% Decrease
Year 3 to Year 4	471	481	2.1% Increase
Year 4 to Year 5	481	429	10.8% Decrease
Year 1 to Year 5	590	429	27.3% Decrease

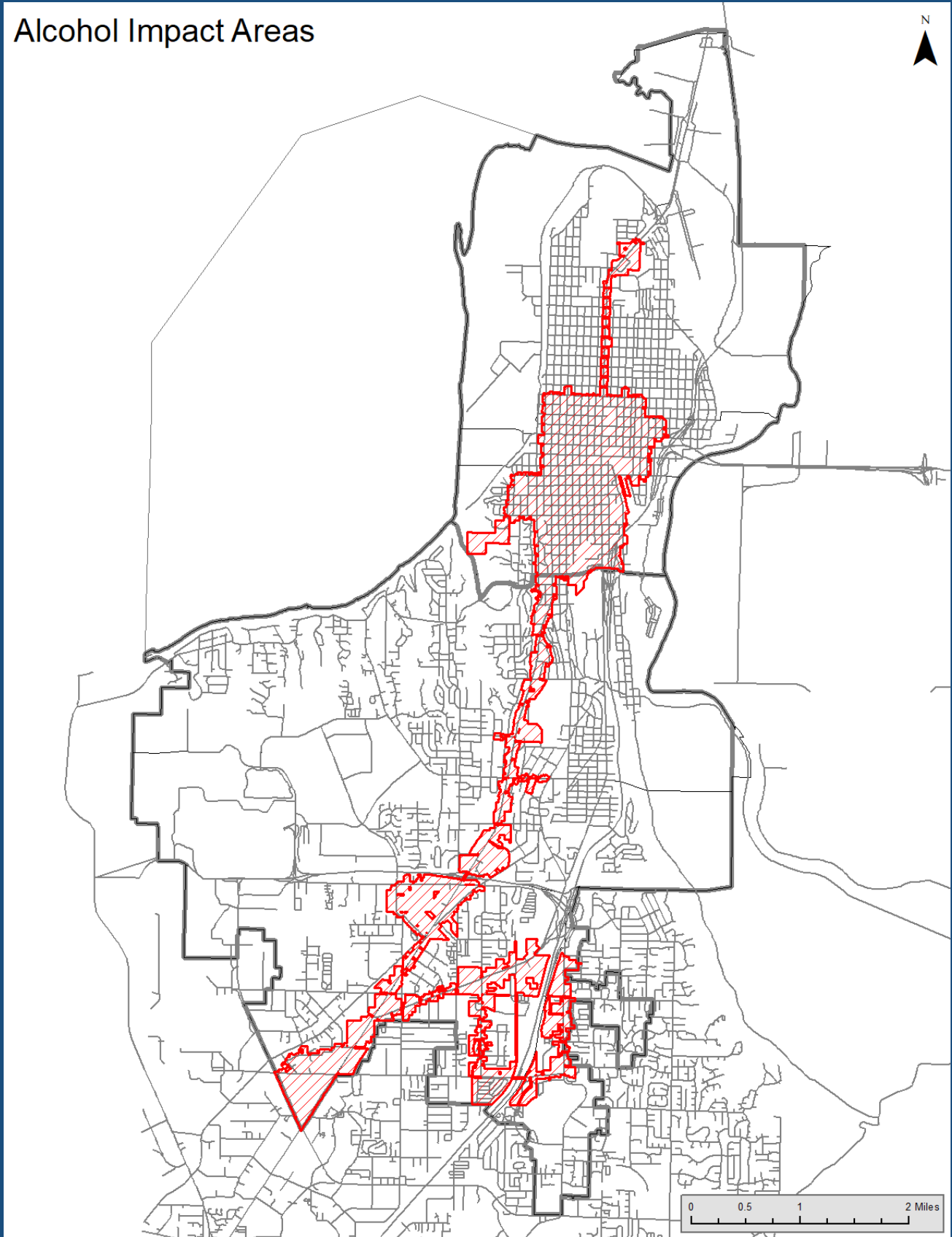
Conversely during the last five years, we see an overall increase in the number of alcohol related incidents outside of the City of Everett’s Alcohol Impact Area.

Years Compared	1st Year’s Outside Total	2nd Year’s Outside Total	% Change Outside AIA
Year 1 to Year 2	485	442	8.9% Decrease
Year 2 to Year 3	442	425	3.8% Decrease
Year 3 to Year 4	425	503	18.4% Increase
Year 4 to Year 5	503	558	10.9% Increase
Year 1 to Year 5	485	558	15.1% Increase

The following pages of the report provide both kernel density and graduated symbol maps of the data.



Alcohol Impact Areas

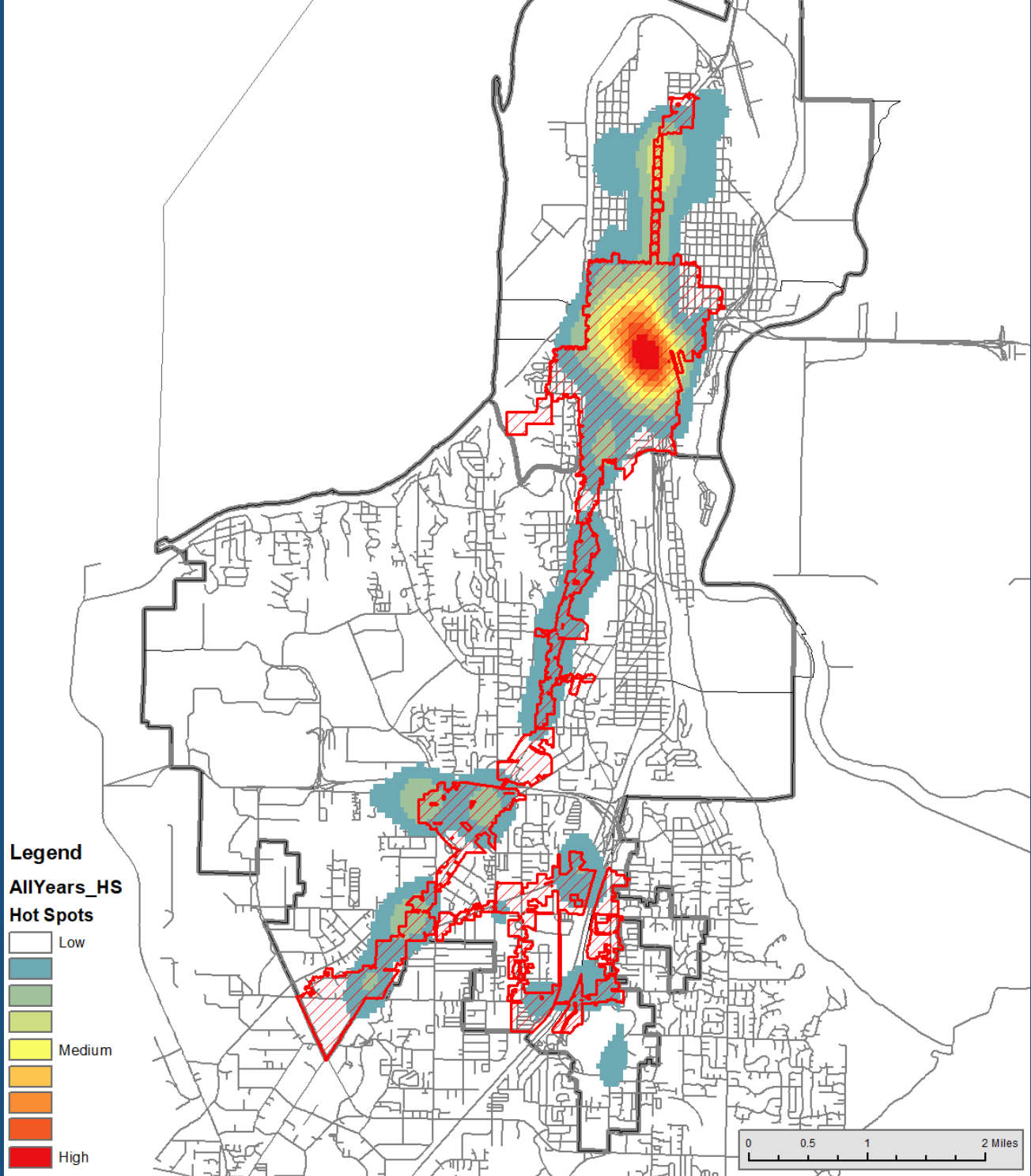




Alcohol Impact Areas

September 1, 2017 - August 31, 2022

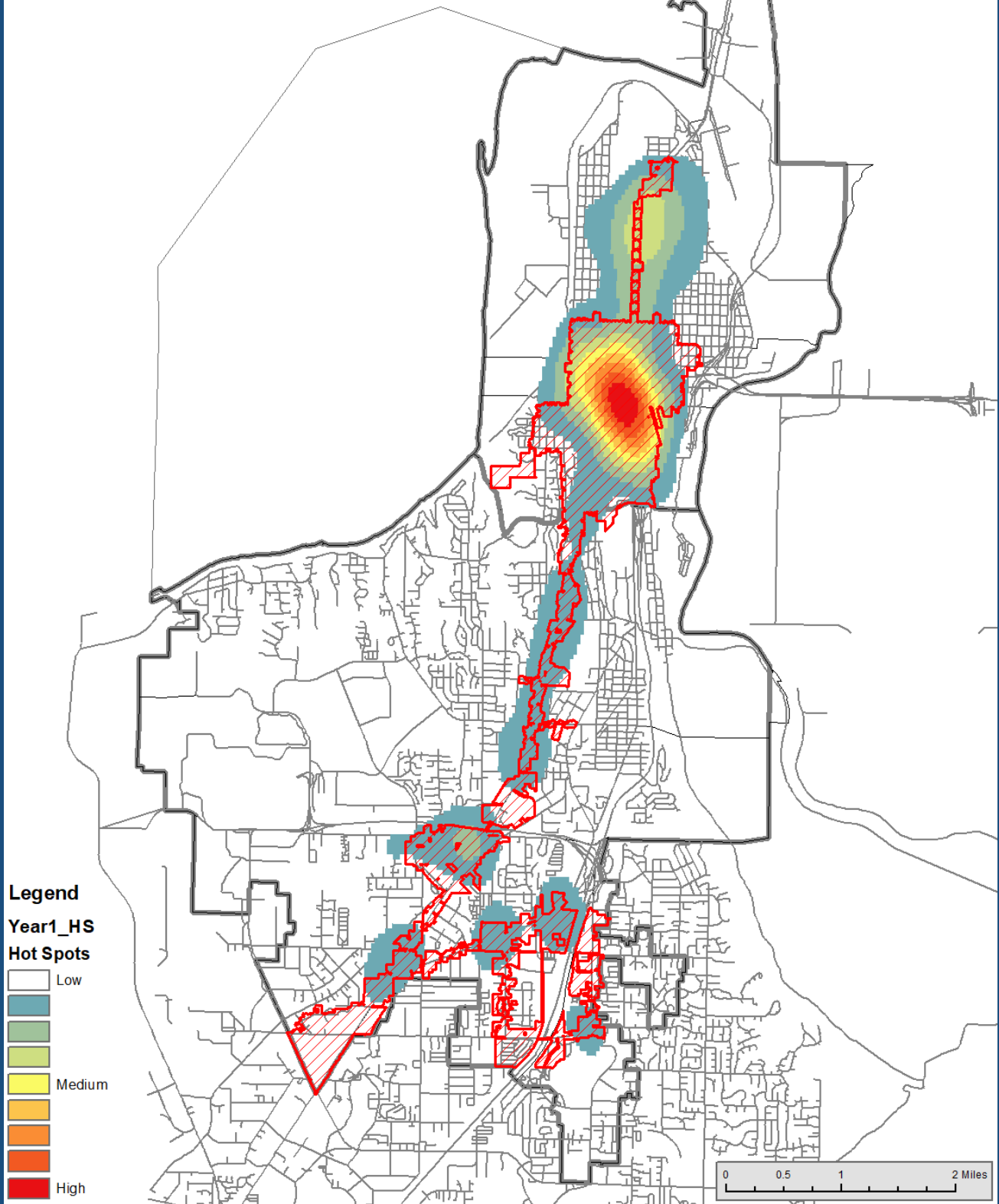
Five (5) Years of Data





Alcohol Impact Areas

Year 1: Sept 1, 2017 - August 31, 2018





Alcohol Impact Areas

Year 1: Sept 1, 2017 - August 31, 2018

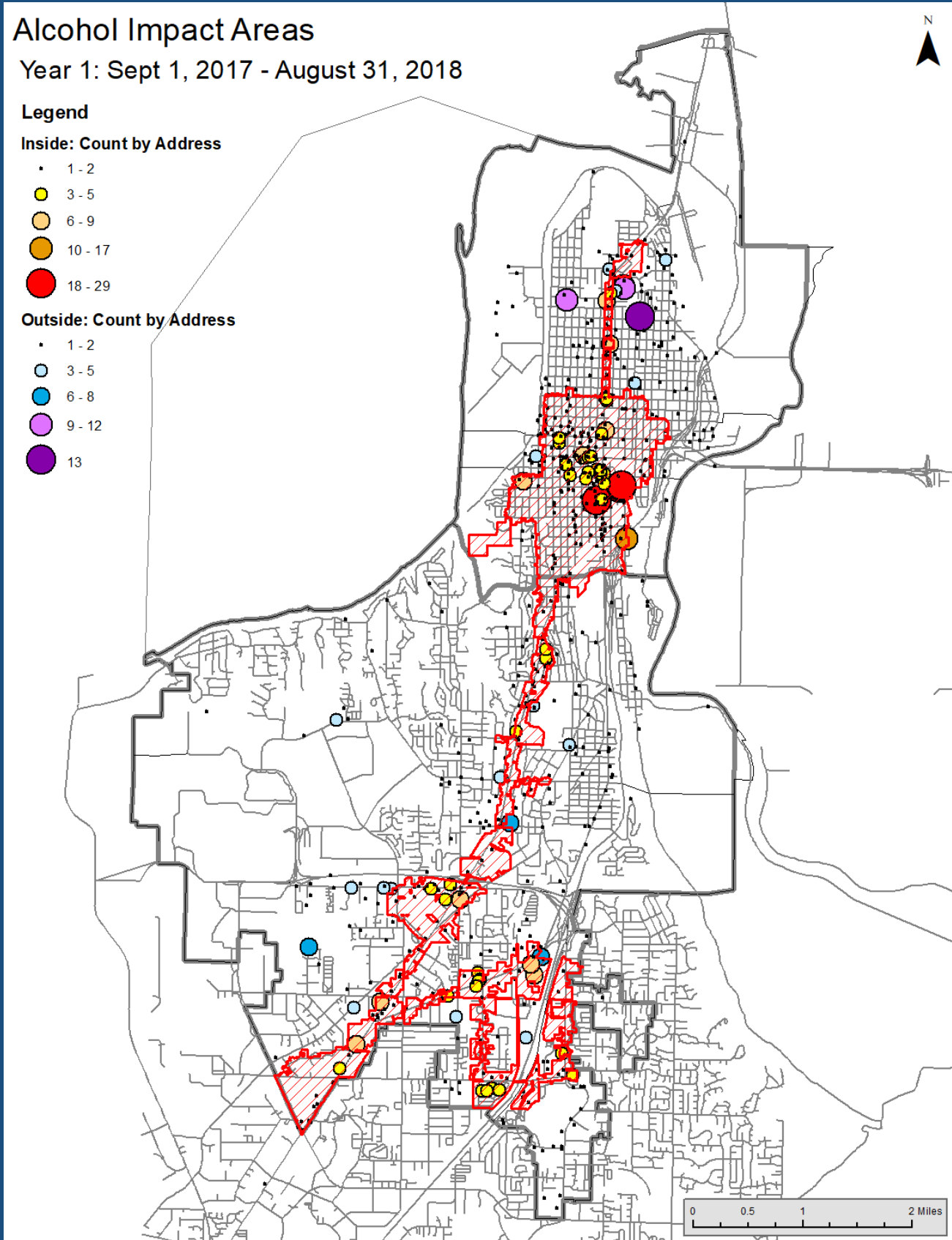
Legend

Inside: Count by Address

- 1 - 2
- 3 - 5
- 6 - 9
- 10 - 17
- 18 - 29

Outside: Count by Address

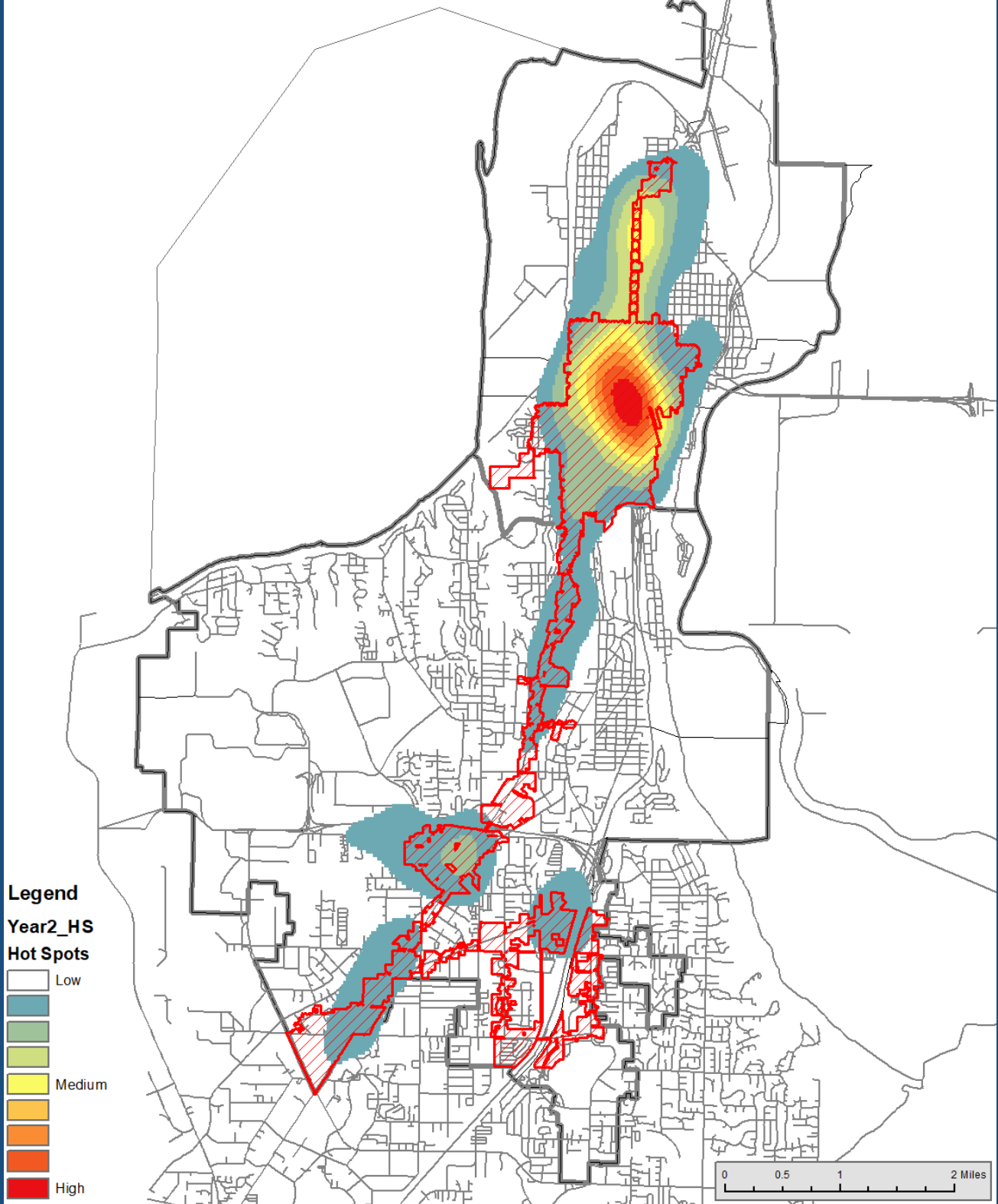
- 1 - 2
- 3 - 5
- 6 - 8
- 9 - 12
- 13





Alcohol Impact Areas

Year 2: Sept 1, 2018 - August 31, 2019





Alcohol Impact Areas

Year 2: Sept 1, 2018 - August 31, 2019

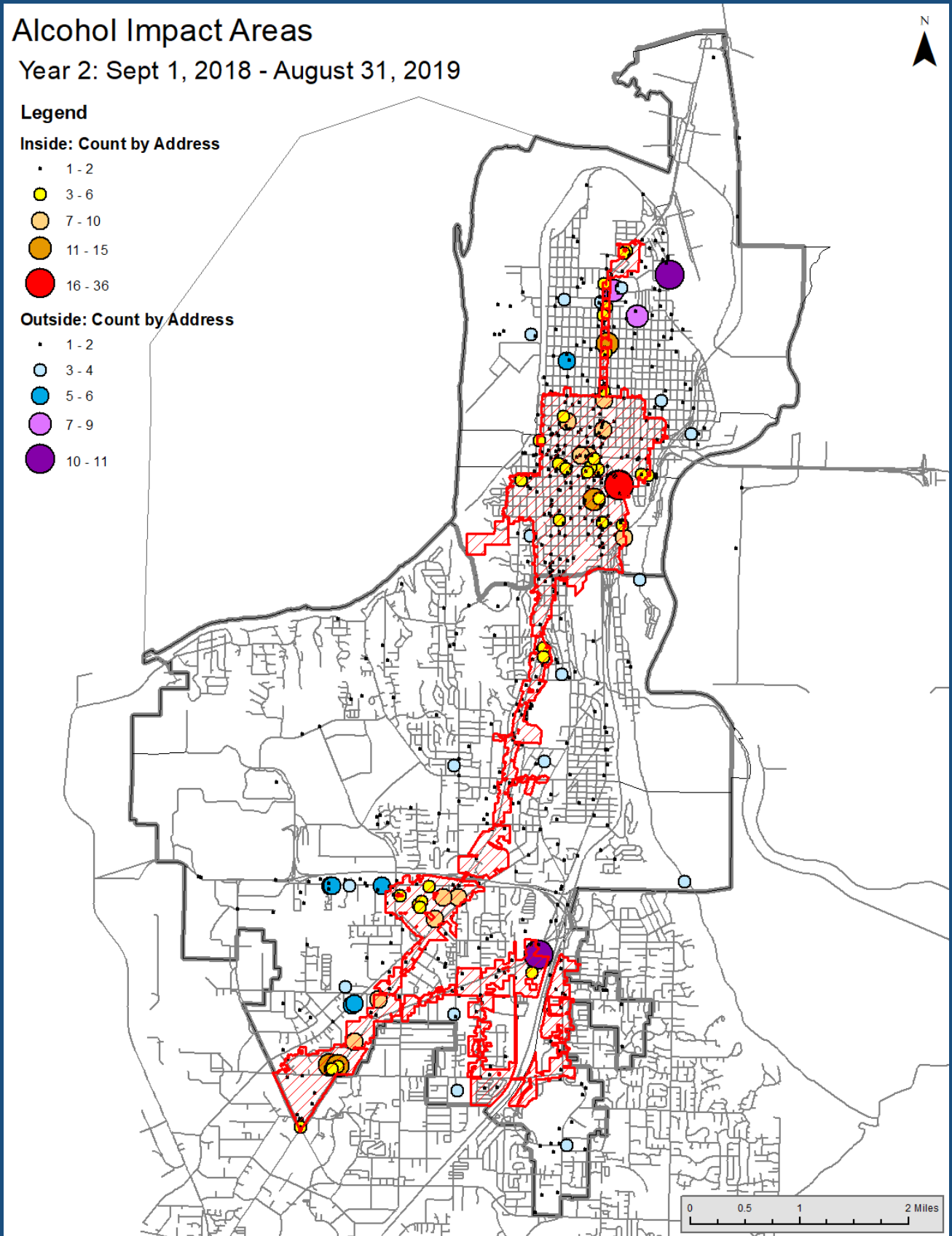
Legend

Inside: Count by Address

- 1 - 2
- 3 - 6
- 7 - 10
- 11 - 15
- 16 - 36

Outside: Count by Address

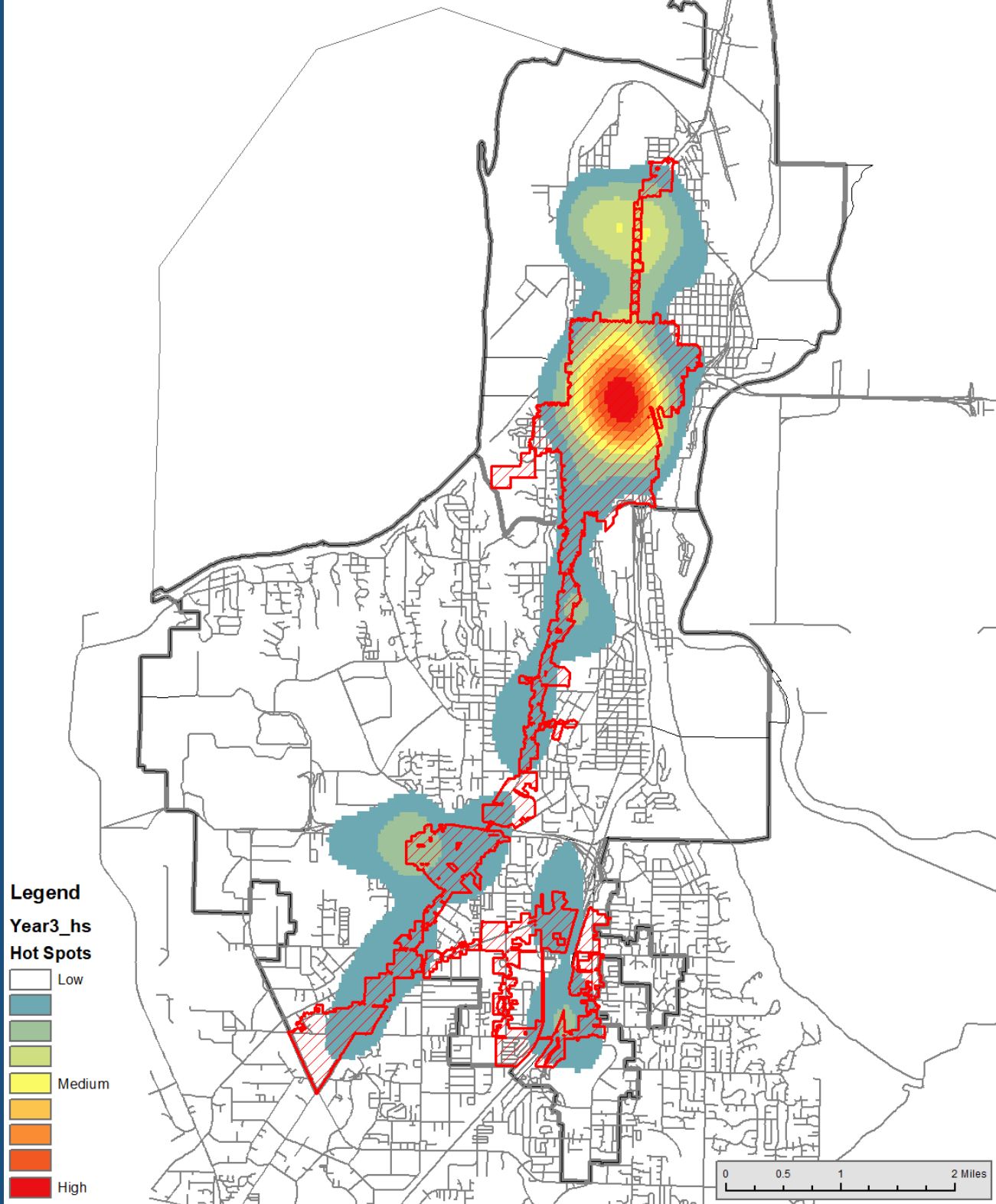
- 1 - 2
- 3 - 4
- 5 - 6
- 7 - 9
- 10 - 11





Alcohol Impact Areas

Year 3: Sept 1, 2019 - August 31, 2020





Alcohol Impact Areas

Year 3: Sept 1, 2019 - August 31, 2020

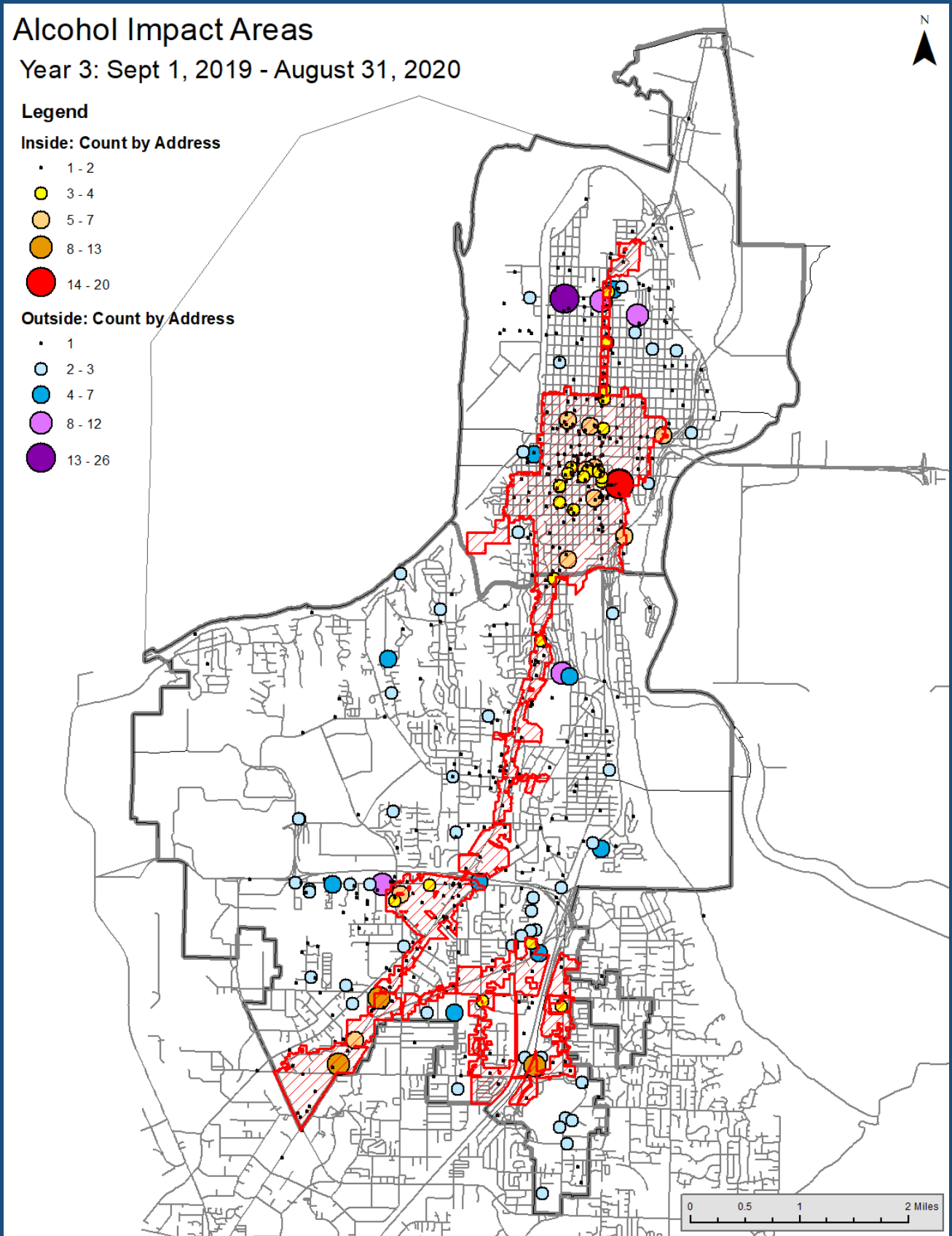
Legend

Inside: Count by Address

- 1 - 2
- 3 - 4
- 5 - 7
- 8 - 13
- 14 - 20

Outside: Count by Address

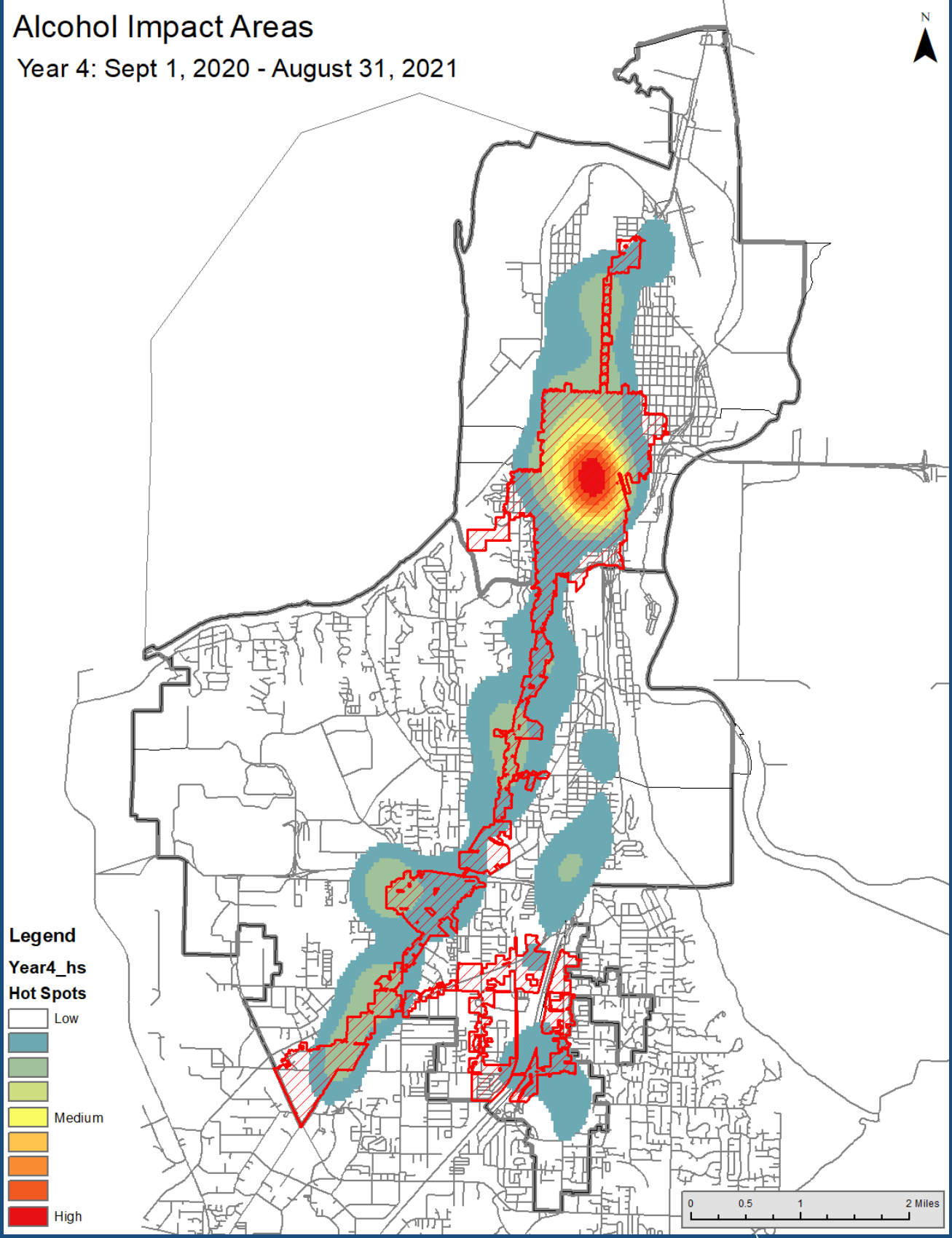
- 1
- 2 - 3
- 4 - 7
- 8 - 12
- 13 - 26





Alcohol Impact Areas

Year 4: Sept 1, 2020 - August 31, 2021





Alcohol Impact Areas

Year 4: Sept 1, 2020 - August 31, 2021

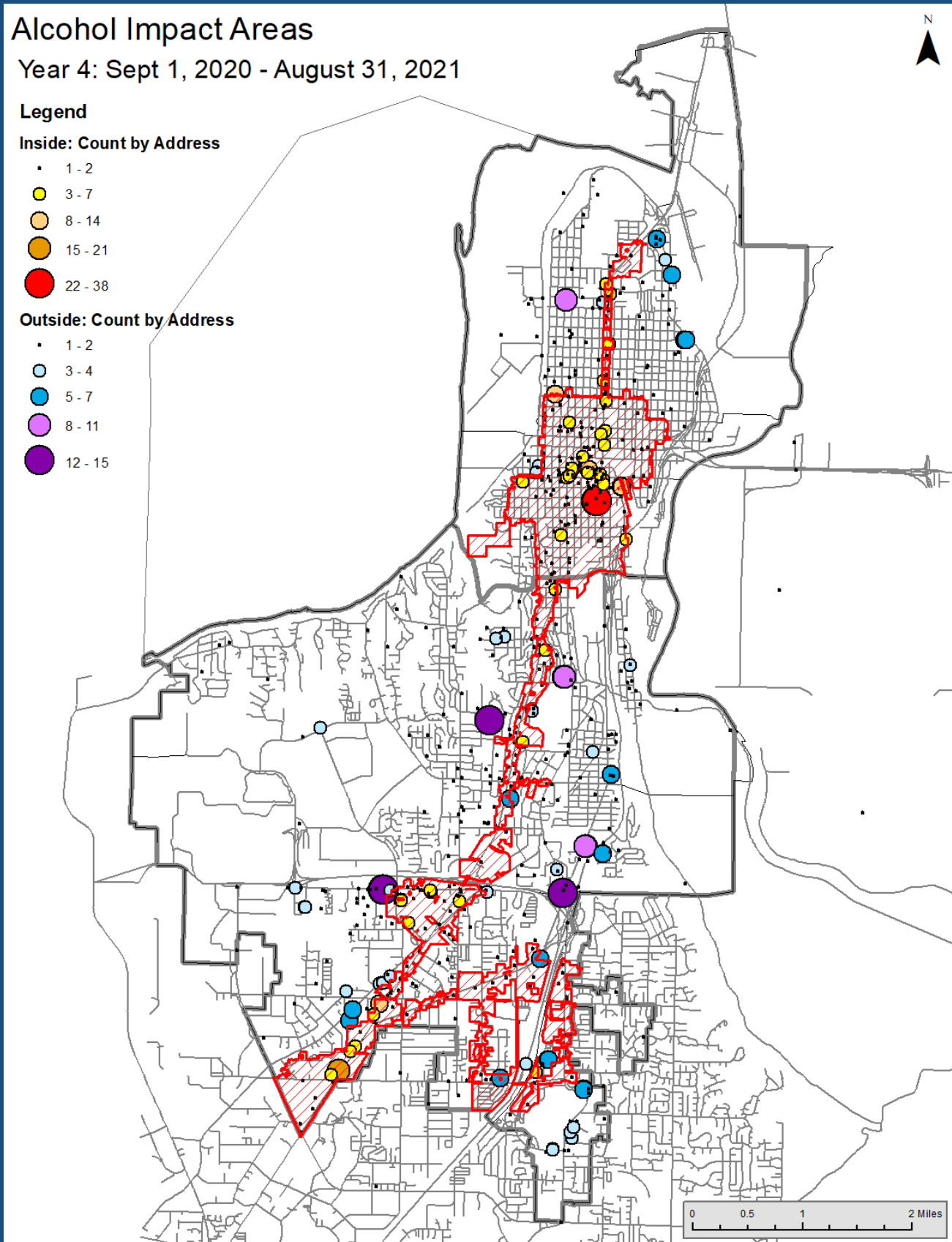
Legend

Inside: Count by Address

- 1 - 2
- 3 - 7
- 8 - 14
- 15 - 21
- 22 - 38

Outside: Count by Address

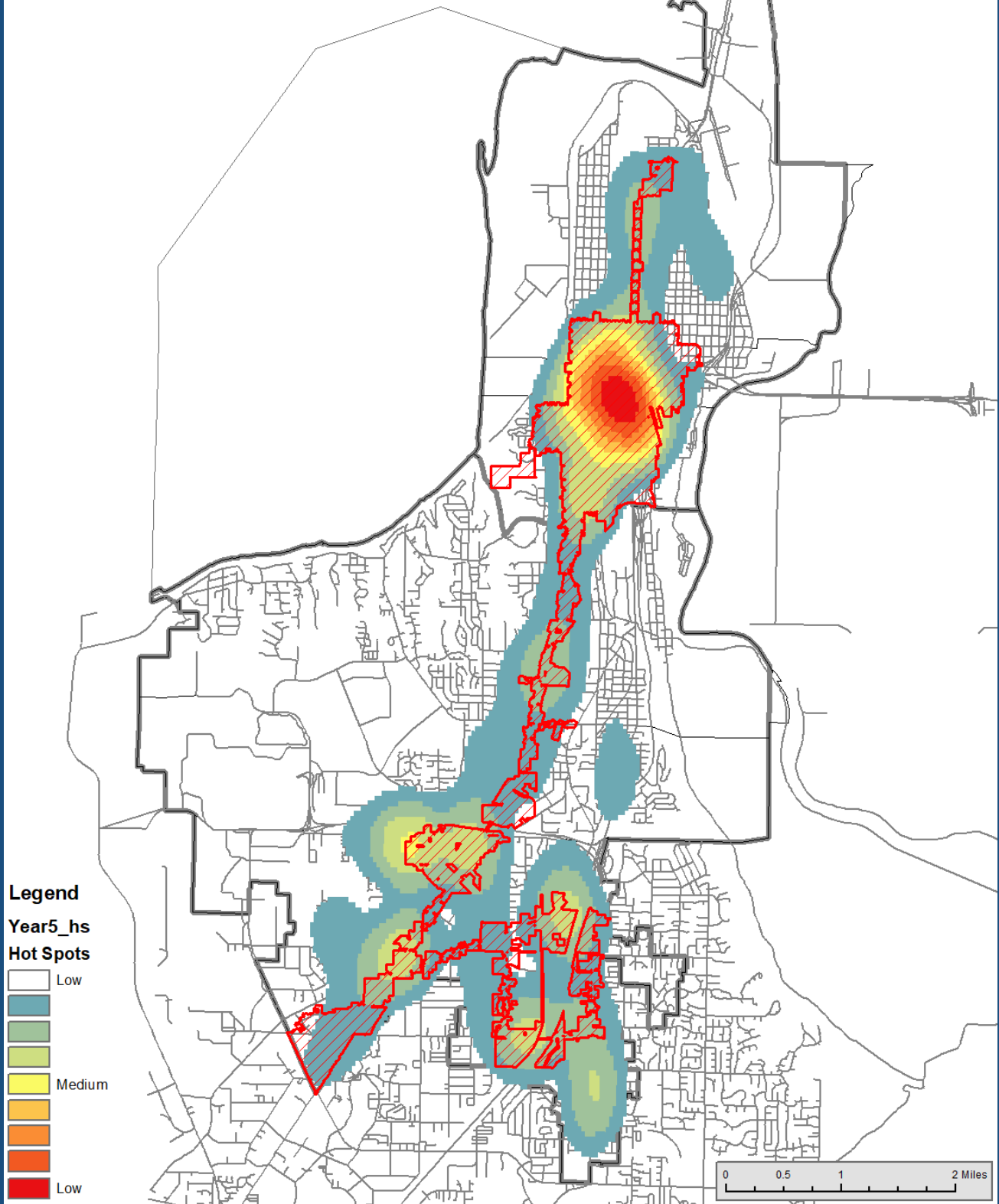
- 1 - 2
- 3 - 4
- 5 - 7
- 8 - 11
- 12 - 15





Alcohol Impact Areas

Year 5: Sept 1, 2021 - August 31, 2022





Alcohol Impact Areas

Year 5: Sept 1, 2021 - August 31, 2022

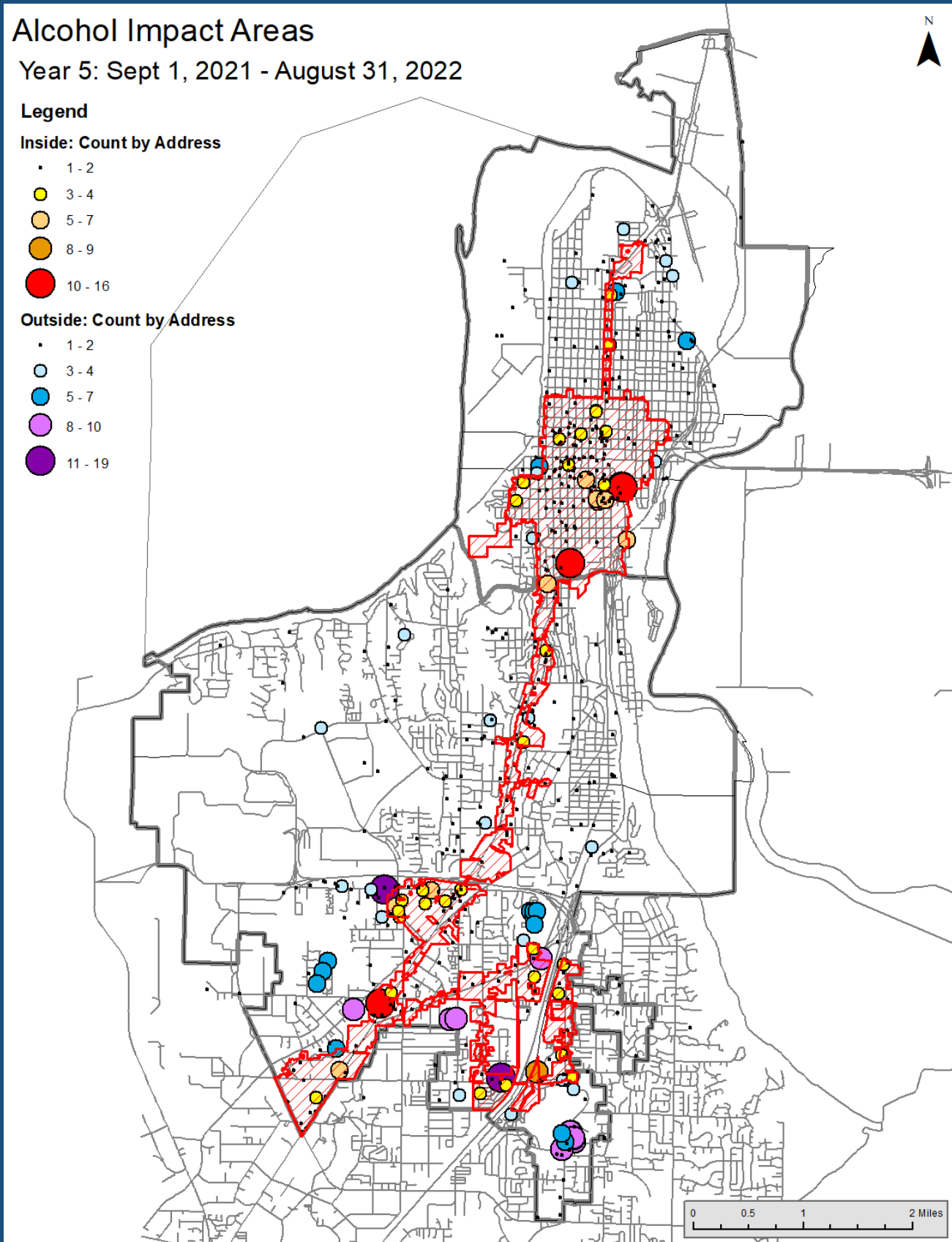
Legend

Inside: Count by Address

- 1 - 2
- 3 - 4
- 5 - 7
- 8 - 9
- 10 - 16

Outside: Count by Address

- 1 - 2
- 3 - 4
- 5 - 7
- 8 - 10
- 11 - 19





Alcohol Impact Area (AIA) - Five year report Summary

The Everett Police Department has maintained an active role in the City's AIA program. At the beginning of 2022, the Everett Police Department's Citizen Volunteers Against Crime (CVAC) staff conducted compliance checks of all registered businesses selling alcoholic beverages inside the Alcohol Impact Area. All 79 businesses were in full compliance with the banned product list. Based upon our departments interaction with members of our community, the Everett Police Department does not see a need, at this time, to add additional products to the AIA banned list.

Based upon the data provided by the Everett Fire Department, it appears the AIA is producing positive results. Over the last 5-years, there has been a 27% decrease of alcohol related incidents within the impact area's boundaries. Conversely, during the same period, there has been a 15% increase in the number of alcohol related incidents outside the designated impact area. The Everett Police Department intends to continue to monitor the activity both within and outside the AIA for possible modifications of it's boundaries in the future. This process will be done after further analysis of the data and with consultation with the Everett Fire Department.

Community outreach continues to be a pillar of the City's plan to mitigate chronic public intoxication. The City of Everett is in the process of having embedded social workers with the police, fire, and library departments. These additional resources, along with the established AIA, should continue to have a positive impact upon alcohol related calls within our city.

The City of Everett, the Everett Police Department, and the Everett Fire Department request the City of Everett's AIA be maintained.

Respectfully,

A handwritten signature in blue ink, appearing to read "Dan Templeman".

Dan Templeman
CHIEF OF POLICE