

**THE WSLCB
INFORMATION SHARING
GROUP (ISG)**

Presented by Lt. Lou D'Amelio,
Northwest Cannabis Education and Enforcement Unit.



**Washington State
Liquor and Cannabis Board**

CANNABIS LOCATIONS ARE OFTEN TARGETED

Crime that targets licensed cannabis locations in Washington state is a serious concern of the Liquor and Cannabis Board.

As the media and licensees raised awareness about this issue, enforcement officers noted that often the crime was not reported to the LCB.

This occurred for a variety of reasons, but improving reporting is key to allowing the resources of the LCB to assist and support licensees.

Thieves crash stolen SUV into Redmond pot shop that has been hit 5 times within past year

WENATCHEE CANNABIS SHOP BURGLARIZED THOUSANDS IN DAMAGE

BREAKING: "Crash and grab" robbery at Lynnwood pot shop

North Seattle pot shop damaged in apparent smash-and-grab burglary

Spokane County cannabis store suffers damage after break-in

Stolen Kia used as battering ram in smash and grab burglary of local weed shop

TWO KEY ISSUES IDENTIFIED:

Licensees feel unsupported by the LCB when they are victimized.

Solution: Education and support for licensed locations tailored to addressing this issue.

Local law enforcement often does not share information beyond local geographical and jurisdictional boundaries.

Solution: Work with law enforcement agencies to share information regarding cannabis related crime statewide.



THE INFORMATION SHARING GROUP (ISG)

- The LCB Information Sharing Group was created in 2025 to address these two key issues of licensee education and law enforcement information sharing.
- The ISG is overseen by a Lieutenant, with oversight by both LCB Cannabis Captains.
- The group's meetings are attended by a handful of cannabis enforcement officers, a member of the Examiner's unit, and an administrative assistant. All members of the group participate as an ancillary duty, in addition to their regular work.

ADDRESSING OBJECTIVE ONE
– INCREASING LICENSEE
SUPPORT

- Develop a checklist to share with licensees during their annual review. The checklist will emphasize crime prevention techniques but also provide information about reporting victimization to the LCB.
- Develop increased training for enforcement officers when they respond to locations that have been victimized.
- Create a dashboard that tracks reports of stolen inventory as reported by licensees.

ADDRESSING OBJECTIVE TWO
– LAW ENFORCEMENT
INFORMATION SHARING

- ISG members reach out to LE agencies investigating reported crimes at cannabis locations. They gather information that can be shared regarding the active investigation.
- ISG members assist local LE agencies with elements of the investigation that pertain to the licensed cannabis industry.
- The group organizes the investigative information into a crime information bulletin, which is then shared to a mailing list of LE agencies across the state, raising awareness.
- The group also acts as a hub for LE agencies that are seeking contacts for cannabis-related investigations.



ISG Information Bulletin

Law Enforcement Confidential

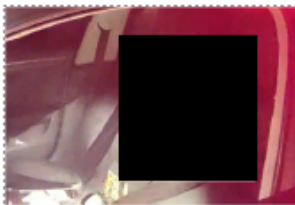
Date: March 24th, 2026

Subject: ██████████ Sheriff's Office contact with ██████████

Summary: Approx. 2335 hours ██████████ Deputies contacted ██████████ on a traffic stop. ██████████ was discovered to be carrying a large quantity of prepackaged cannabis items, in addition to cocaine and heroin. Multiple firearms and \$2200 in cash were also discovered in the vehicle. The cannabis items are associated with at least one licensed cannabis location, ██████████. Liquor and Cannabis Officers are working to locate other licensed locations that may have been the source of the cannabis items in ██████████ possession. Many of the cannabis items are packaged, but not labeled with traceability labeling, indicating that they may have been stolen from a cannabis processor or producer.

If your agency possesses any information concerning where these products may have been obtained, please contact either ██████████ or the Point of Contact for the Washington Liquor & Cannabis Board Information Sharing Group, Jessica Petteys - 360-664-1632
jessica.petteys@lcb.wa.gov

Photos/Evidence:



Suspect: ██████████

Suspect Vehicle: ██████████

Law Enforcement Use Only – Do not disseminate without permission of the Washington State Liquor and Cannabis Board Information Sharing Group.
Contact – Jessica.Petteys@lcb.wa.gov



Some of the more than 200 cannabis items seized as evidence

Law Enforcement Use Only – Do not disseminate without permission of the Washington State Liquor and Cannabis Board Information Sharing Group.
Contact – Jessica.Petteys@lcb.wa.gov

THANK YOU FOR YOUR TIME