



Washington State
Liquor and Cannabis Board

Research Program Updates

March 2025



Washington State Liquor and Cannabis Board



Washington State
Liquor and Cannabis Board

Strategic Plan 2024-2029



Goal One
All Washington communities have the highest level of public health and public safety



Goal Two
Our services are accessible and responsive to the needs of communities, partners, and our customers



Goal Three
We have a culture of trust, belonging, and valuing people

Vision

Safe communities for Washington State

Mission

Promote public safety, public health, and trust through fair administration, education, and enforcement of liquor, cannabis, tobacco, and vapor laws.

Values

We are professional and dedicated public servants. These values are the foundation of our culture and guide our interactions with each other and the communities we serve.

Respect

We are inclusive, treating everyone with courtesy and dignity, ensuring equity for all.

People Focused

We put those we serve and each other at the center of our work.

Open Communication

We practice transparency, invite input, listen to understand, and share accurate and timely information.

Accountability and Integrity

We hold ourselves to the highest ethical standards and follow through on our commitments.

Continuous Improvement and Meaningful Results

We seek creative solutions to provide better outcomes by evolving our processes, systems, and services.





Agency-wide Strategic Goals

#1. All Washington communities have the highest level of public health and public safety.


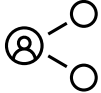
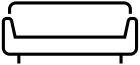
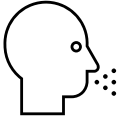


Publicly share 10 research briefs.

Develop foundational, public-facing dashboards.



We have published 13 research briefs!

In 2025, we published:

- Liquor**
 - Impacts of Blood Alcohol Concentration (BAC) Driving Limits 
 - Alcohol Common Consumption Limits 
- Cannabis**
 - Cannabis Consumption Sites 
 - Cannabinoid Hyperemesis Syndrome 
- Other**
 - Intoxicating Hemp Products 
 - Psilocybin 

Soon to be published:

- Home Cannabis Cultivation 

Challenges

- Limited research available on certain topics
- Useability and/or limited outreach
- Differences in legal vs. science definitions



Washington State Liquor and Cannabis Board

Two dashboards published

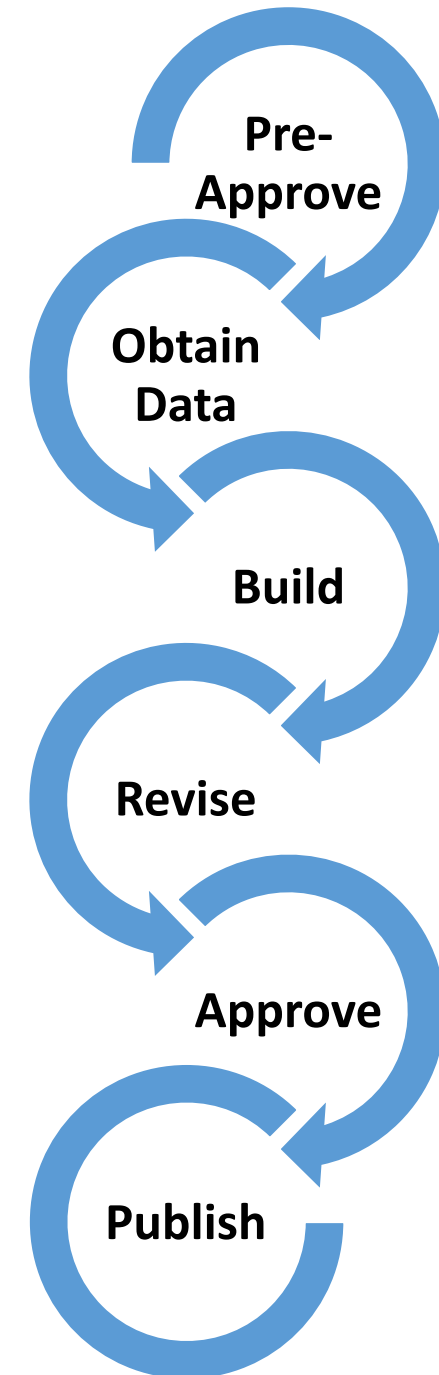
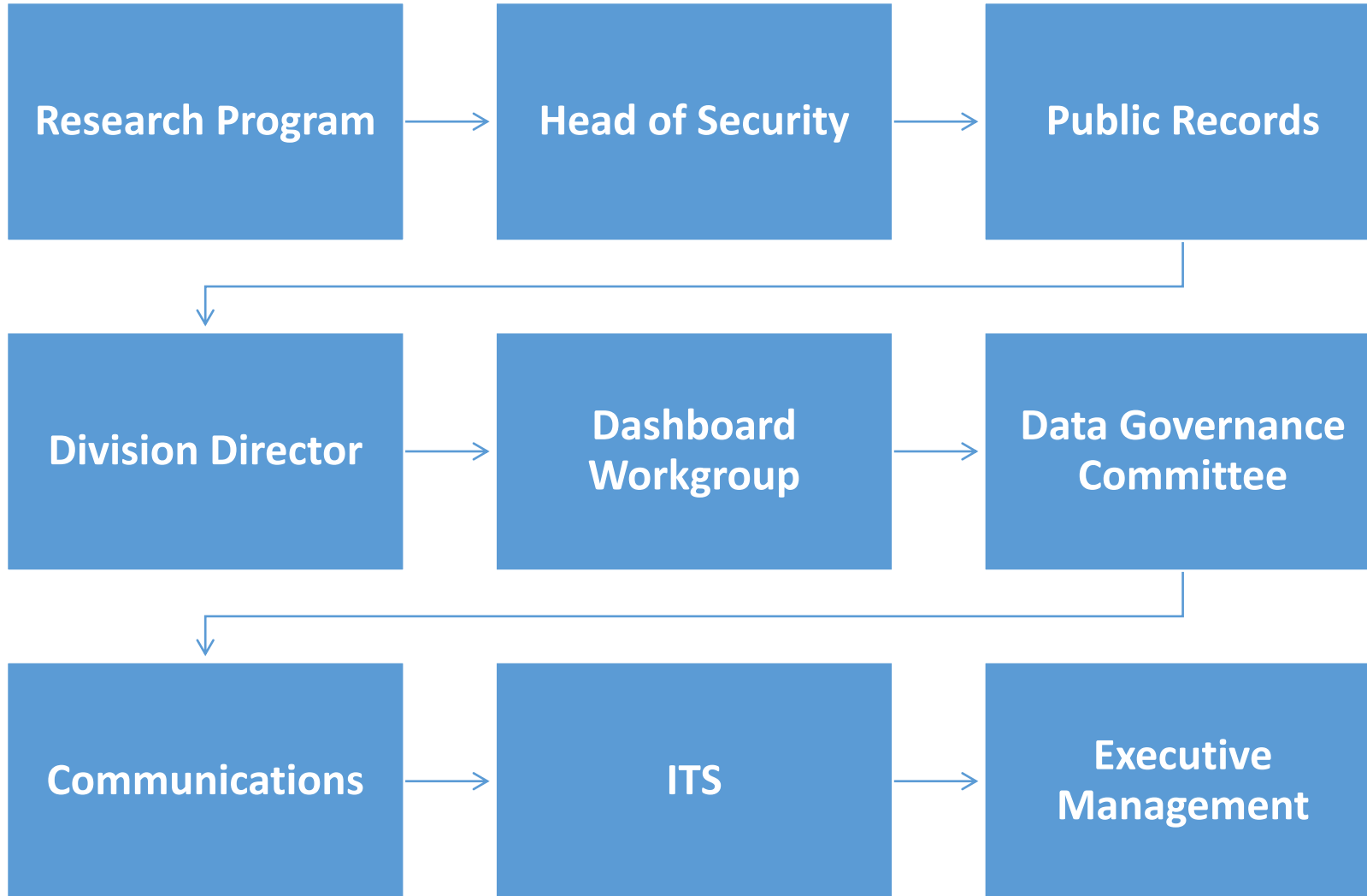
More are coming **very** soon!

- Compliance checks for cannabis, liquor, and tobacco products
- FDA Inspections

External Agency Dashboards		
Dashboard	Agency	Description
Washington State		
Healthy Youth Survey (HYS)	Department of Health (DOH), Health Care Authority (HCA), Liquor and Cannabis Board (LCB), Office of the Superintendent of Public Instruction (OSPI)	Statewide and county level estimates on youth use, access, and perceptions of regulated substances.
Behavioral Risk Factor Surveillance System (BRFSS)	Department of Health (DOH)	Accountable Communities of Health (ACH) and Local Health Jurisdiction (LHJ) estimates on tobacco (e.g., cigarettes, e-cigarettes) and cannabis use.
Injury Deaths	Department of Health (DOH)	Statewide and county level drug and alcohol-induced deaths by gender and by race and ethnicity.
Perinatal Dashboard	Department of Health (DOH)	Statewide and Accountable Communities of Health (ACH) Results from the Pregnancy Risk Assessment Monitoring System (PRAMS) on alcohol, tobacco, and cannabis use before and during pregnancy.
Fatalities Dashboard	Washington Traffic Safety Commission (WTSC)	Statewide, county, and city trends on impaired drivers involved in fatal car crashes.
National		
National Survey on Drug Use and Health (NSDUH)	Substance Abuse and Mental Health Services Administration (SAMHSA)	Nationwide and statewide results on substance use, substance use disorder, and risk perception.



Washington State Liquor and Cannabis Board





Agency-wide Strategic Goals

#2. Our services are accessible and responsive to the needs of our communities, partners, and customers.

Establish a coordinated approach to external surveys





External Surveys

- **Budtender Education –**
Collection is currently ongoing.

July – October
2024:
Study
Preparation

November
2024:
User Testing

December
2024:
IRB
Submission

February
2024:
Recruitment
Started

March 2024:
Recruitment
Ongoing



Washington State
Liquor and Cannabis Board

Cannabis Licensees and Retail Employees

What's the role of budtenders in cannabis stores?
Help LCB shape budtender education in Washington State by
taking a 10-minute survey.

Help shape budtender education.
Take this survey!



Responses are completely anonymous.

Thank you!

Questions? Email the LCB Research Program at: lcbresearch@lcb.wa.gov



Agency-wide Strategic Goals

#3. We have a culture of trust, belonging, and valuing people.

Recent University Collaborations

- UW NIH Grant Proposal Support on Cannabis Consumption Lounges
- WSU NIDA Grant Advisory Committee on Cannabis Misuse Prevention for Young Adults
- UC Cannabis Research Workshop Panel Committee Member
- University of Waterloo International Cannabis Policy Study



Agency-wide Strategic Goals

#3. We have a culture of trust, belonging, and valuing people.

Recent Interagency Collaborations

- Scientific manuscript submission on Cannabis Consumer Purchasing Decisions with DOH
- Washington State Traffic Safety Summit Panel Submission with WSP
- Healthy Youth Survey (more on that in a minute...)



Agency-wide Strategic Goals

#3. We have a culture of trust, belonging, and valuing people.

What are we working on next with collaborations?

- Prepping for roundtable in May
- Discussing possible solutions to link blood with place of last drink
- Writing a manuscript on Cannabinoid Hyperemesis Syndrome using national data from the International Cannabis Policy Study.



Washington State Liquor and Cannabis Board

More on...

healthy
youth
SURVEY



Washington Office of Superintendent of
PUBLIC INSTRUCTION



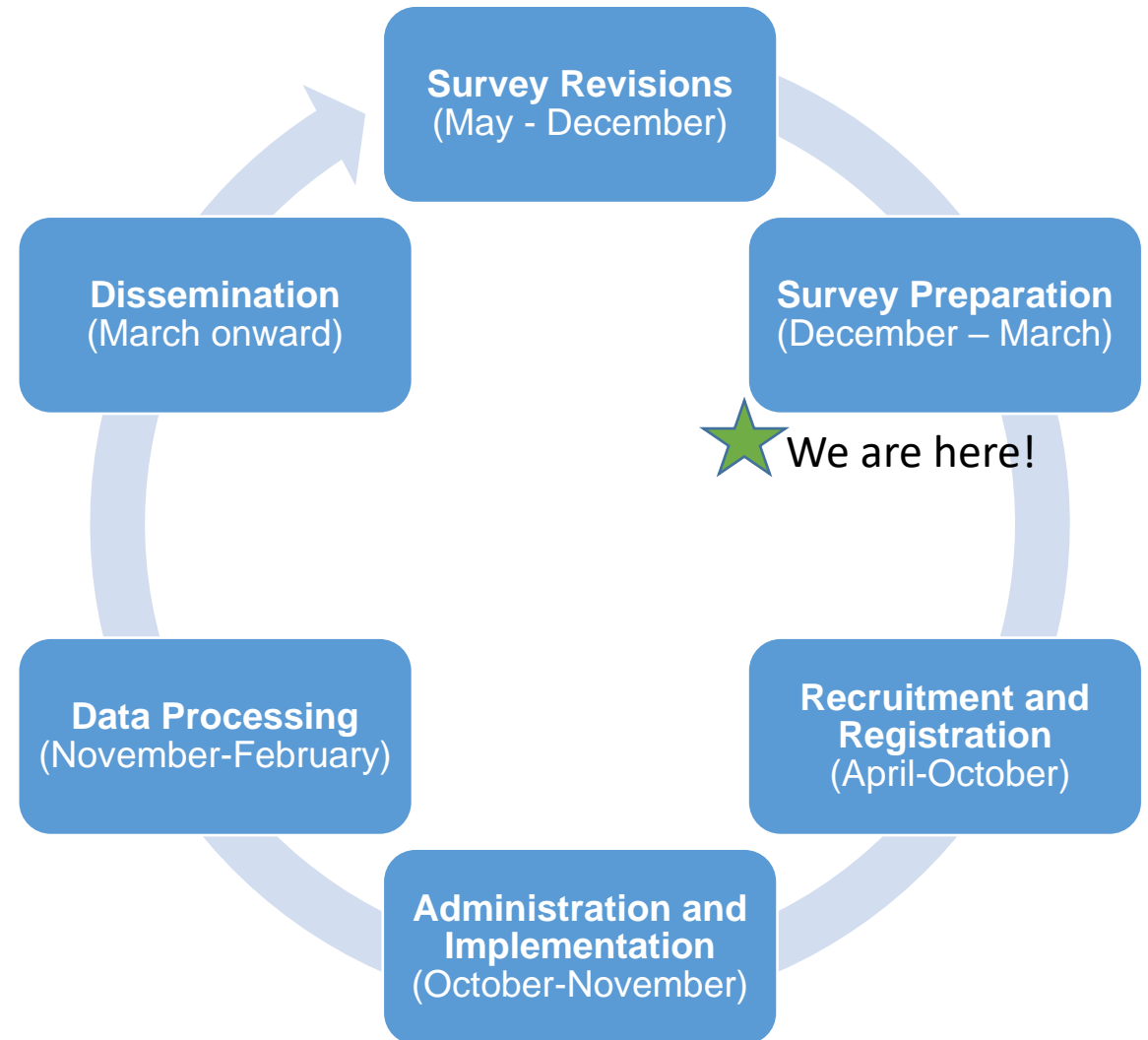
Washington State Department of
HEALTH

Washington State
Health Care Authority



HYS 2025 Timeline

- Each cycle is a two-year period
- 2024 was a revision year
- 2025 is a recruitment and administration year

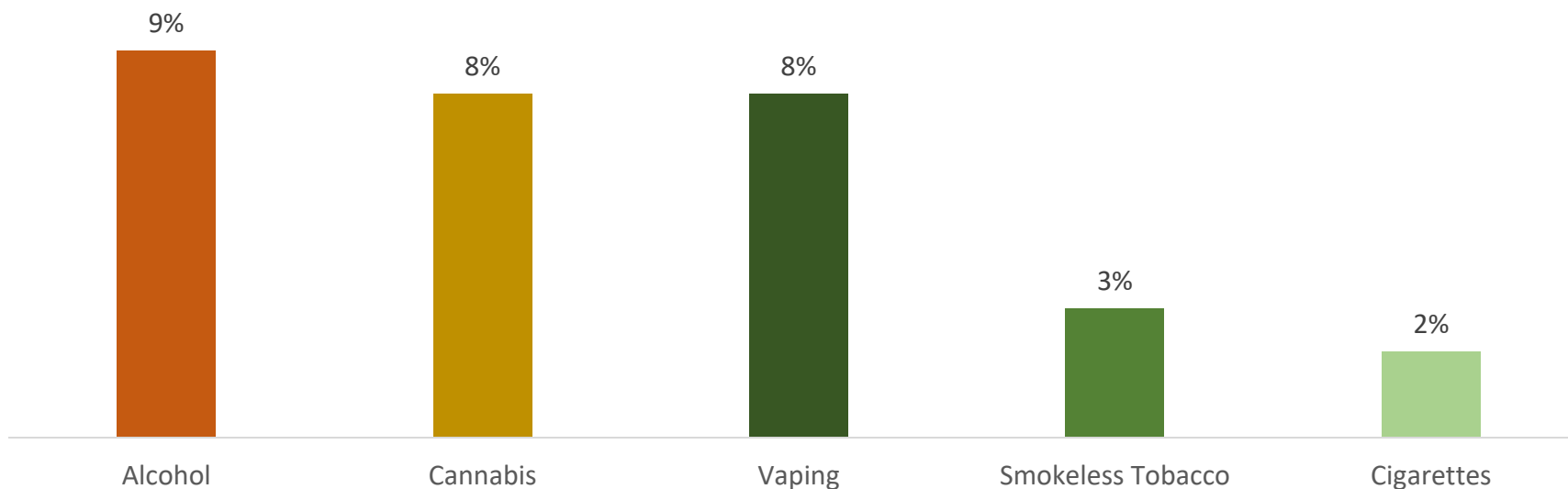




Washington State Liquor and Cannabis Board

In the last HYS survey (2023), results showed:

- Substance use remains 50%+ lower than pre-pandemic (2018)
- Current substance use had no significant change 2021 to 2023
- HYS 2023 Current (30-Day) Use Among 10th Graders:





HYS Focus Groups: Crossover Beverages

1. How familiar are you with these products?
2. How would you describe these products?
3. Have you heard of the term “crossover beverage”?

Discuss



Take a look at the following products:





Overview of Changes for HYS 2025

- **Added e-cig/vape risk perception questions**
 - *If you wanted to get: An e-cigarette or vape, how easy would it be for you to get one?*
 - *How much do you think people risk harming themselves if they: Vape regularly (at least once or twice a week)*
 - *How wrong do YOU think it is for someone your age to: Vape?*



Overview of Changes for HYS 2025

- Added e-cig/vape risk perception questions
- **Better defined an 'alcoholic drink'**
 - *"A drink is a glass of wine, a bottle or can of beer, a shot glass of liquor, a mixed drink, etc."*



Overview of Changes for HYS 2025

- Added e-cig/vape risk perception questions
- Better defined an 'alcoholic drink'
- **Included additional alcoholic beverage options**
 - *"Cider"*
 - *"Spiked or hard beverages, such as seltzer, tea, lemonade, or soda"*



Overview of Changes for HYS 2025

- Added e-cig/vape risk perception questions
- Better defined an 'alcoholic drink'
- Included additional alcoholic beverage options
- **Specified hemp-derived products**
 - *"If you have ever used hemp-derived products like Delta-8 ($\Delta 8$), Delta-10 ($\Delta 10$), or THC-O, how did you get them? Choose all that apply."*



Overview of Changes for HYS 2025

- Added e-cig/vape risk perception questions
- Better defined an 'alcoholic drink'
- Included additional alcoholic beverage options
- Specified hemp-derived products
- **Added online/social media as a response option for ways youth get substances**
 - *"During the past 30 days, if you used [SUBSTANCE], how did you get it? Choose all that apply."*
 - I got them from a social media app or from the internet.*



Washington State Liquor and Cannabis Board

Thank you! Questions or comments?