



Washington State
Liquor Control Board

Liquor Control Board Interim Policy #01 - 2009

Subject: Application of Agency Key Impacts Evaluation Tool

Effective Date: January 7, 2009

Ending Date: January 2, 2010

Approved:


Lorraine Lee, Board Chairman


Roger Hoen, Board Member


Ruthann Kurose, Board Member

Background

The 2006 Three Tier Task Force recommended the Liquor Control Board (LCB) create key impact measures to allow the agency to collect data to effectively show how policy or rule changes could affect the industry, consumers, the state, and society. The recommendation specifically stated *"The Legislature is encouraged to provide funding to the LCB to develop research and analysis capability, and work collaboratively with stakeholders and other agencies and organizations to collect independent data, and to use/analyze existing data."* An internal workgroup, created in 2008, developed a list of key impact measures and the Key Impacts Evaluation Tool in response to the Three Tier Task Force recommendation.

Purpose Statement

The purpose of Liquor Control Board Interim Policy #01 – 2009 is to document that the agency will use the Key Impacts Evaluation Tool to make decisions on proposed law, rule, or policy changes. The evaluation process and identification of impact measures is incorporated into the agency's bill analysis process. This Policy describes the duration of the pilot use of the Evaluation Tool, criteria, and general process guidelines.

Policy Statement

One of the LCB's top priorities is to promote public safety. To support this mission laws, rules, and policy changes will be evaluated against a standard set of criteria and key impact measures to determine the potential impacts to the LCB. The criteria includes:

- Advertising and Marketing Activities
- Enforcement and Licensing
- Education and Training
- Pricing Practices
- Access and Availability
- Agency Resources

Policy Duration

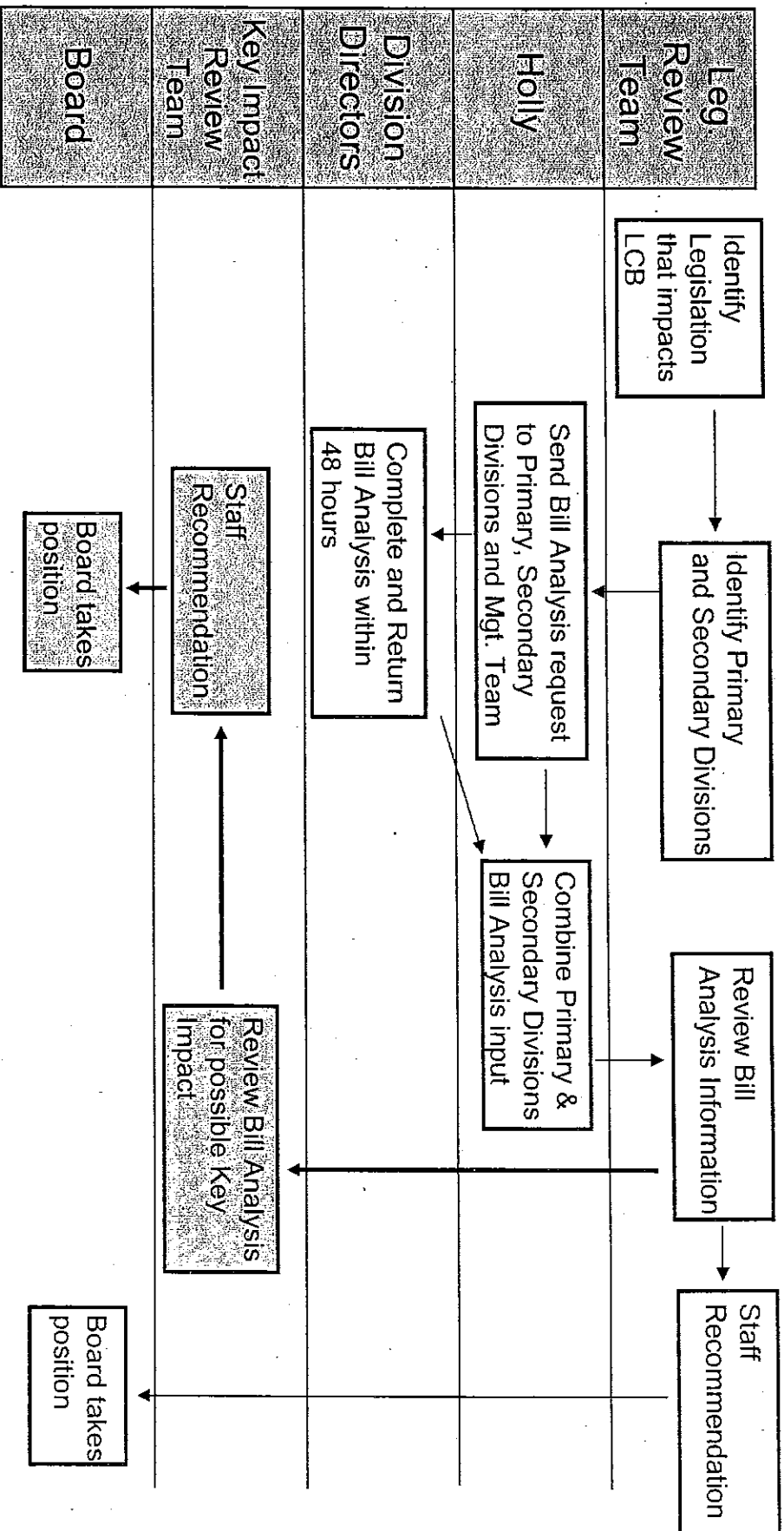
The Key Impacts Evaluation Tool will be used on a trial basis to determine its effectiveness. Within a year of using the tool, the Board will determine if the tool needs further definition or additional criteria.

Policy Implementation

The Key Impacts Evaluation Tool is for internal use only. Refer to the Guidelines for Applying the Key Impacts Evaluation Tool to the Legislative Process for more details on how and when to use the tool and impact measures.

11/20/08 (mlm) rev. 1/2/09

2009 Legislative Process Flow Chart



Leg. Review Team: Rick Garza, Karen McCall, Virgil Sweeney, Brian Smith, Holly Longo

Key Impact Review Team: Pat Kohler, Rick Garza, Randy Simmons, Pat Parmer, Alan Rathbun, Pat McLaughlin, Karen McCall, Holly Longo

