

For

**Washington
State**

**Liquor Control
Board**

Merrit Long, Chair

Vera Ing

Roger Hoen

June 17

2003

**Evaluation of the Tacoma,
Washington, Alcohol Impact
Area (AIA)**

Report

Of

**Research Activities Undertaken in Support
of an Evaluation of the Tacoma,
Washington, Alcohol Impact Area (AIA)**

By

John Tarnai, Ph.D.

Social & Economic Sciences Research Center

Washington State University

<http://www.sesrc.wsu.edu>

Page Number

Table of Contents

3	Executive Summary
7	Overview
8	Background
10	Evaluation Design
11	Study Components
12	Telephone Survey of Community Residents
21	Mail Survey of AIA Retailers
28	Web Survey of People who Work in the AIA
33	Summary of Survey Results
35	Beer and Wine Distributors
36	Statistical Data
39	Focus Groups
40	Community Volunteers
40	Community Residents
41	Chronic Public Inebriates
42	AIA Retailers
43	Analysis of Retail Sales Data
47	Summary of Evaluation Results
52	Conclusions
53	Recommendations
54	References
55	List of Restricted Products
56	Acknowledgments
57	Map of the AIA

EXECUTIVE SUMMARY

The Washington State University Social and Economic Sciences Research Center conducted a study of the Alcohol Impact Area (AIA) policy in effect in the city of Tacoma, Washington. Different scientific approaches were used to determine if there have been any changes in the problem of chronic public inebriation as a result of the restrictions on alcohol sales imposed by the Washington State Liquor Control Board (WSLCB).

The study results suggest that the AIA restrictions in effect over the past year have been effective at addressing the problem of chronic public inebriation. Although it is not possible to conclude that all the changes found are due solely to the AIA policy itself; it is probable that the AIA restrictions on alcohol sales are one aspect of an entire community wide effort to deal with chronic public inebriation.

Background

The AIA rules, Washington Administrative Code (WAC) 314-14-210 through WAC 314-12-225, establish a framework under which the WSLCB, in partnership with local government and community organizations, can act to mitigate the negative impacts on a community that result from the presence of chronic public inebriation. Under these rules, chronic public inebriation exists when the effects of the public consumption of alcohol and/or public intoxication occur in concentrations that endanger the welfare, health, peace, or safety of a community.

In December 2001, the WSLCB designated as an Alcohol Impact Area the urban core of the city of Tacoma, approximately six square miles.

As a result of the AIA designation, the WSLCB banned the sale of some 30 brands of high-alcohol content, low price beer and wine products by liquor retailers located inside the AIA. This restriction has been in effect since March 1, 2002.

Study Scope

AIA rules provide that one year after the WSLCB recognizes the first AIA, a study of the effectiveness of the AIA rules would be conducted. The study's scope and methods were primarily intended to:

- Determine whether there have been any significant changes in the negative impacts of chronic public inebriation in the designated alcohol impact area.
- Gather information and data on retailers' marketing practices and buying habits of chronic public inebriates that will help the community and the WSLCB evaluate which restrictions might be effective in addressing the problem of chronic public inebriation.

The study used two basic research designs commonly used to evaluate social programs. Consistent with good practice in evaluation research, the evaluation used multiple methods to obtain information relevant to the assessment of the effectiveness of the AIA restrictions. These methods were:

- A telephone survey of over 200 randomly selected household residents from the city of Tacoma.

- A mail survey of 56 retailers that have liquor licenses to sell alcohol products “to go”; 52 retailers were located within the AIA boundaries and 4 retailers were within 5 blocks of the AIA boundaries. From these, 19 retailers completed and returned the survey for a 34% response rate.
- A web survey of people who work in the downtown urban core area of Tacoma. A total of 165 people responded.
- A telephone survey of beer and wine distributors in the Tacoma AIA.
- Focus groups of the following, to obtain qualitative information about the effects of the AIA restrictions:
 - Community volunteers
 - Community residents
 - Retailers with liquor licenses in the AIA and located within 5 blocks of the AIA boundaries
 - Chronic Public Inebriates at the Tacoma Rescue Mission
 - Chronic Public Inebriates at the Detox facility
- Collection and analysis of statistical data from the city of Tacoma prior to and after the AIA implementation, on the following:
 - Monthly number of police service calls for “drunk in public,” “liquor in park,” and other situations.
 - Monthly number of admissions to the Tacoma Detox facility
 - Number of emergency medical service calls in the AIA, and non-AIA parts of Tacoma
- A comparison of changes in gross sales before and after the AIA implementation for retailers with liquor licenses to sell alcohol “to go.”

Key Findings. The study results suggest that the AIA restrictions have been effective in addressing the problem of chronic public inebriation in the AIA. The following results are strong indicators of improvements in the welfare of the community:

- **35% Decrease in Emergency Medical Service (EMS) incidents.** In the 13 months prior to the AIA implementation, there were 1036 alcohol-related EMS incidents with the AIA and 667 such incidents in the 13 months after the AIA policy began. (During the AIA period, there was a 15% increase in EMS incidents in parts of the city outside of the AIA).
- **21% Decrease in Detox Admissions.** Detox admissions averaged 132 cases each month from January 2000 through January 2001. During the period from March 2002 through March 2003, detox admissions averaged 104 per month.

- **61% decrease in “Liquor in the Park” police service calls.** In the 13 months prior to the AIA, there were 54 police service calls for “liquor in the park” within the AIA; this dropped to 21 calls in the 13-month period after the AIA policy began. (A 19% decrease occurred for calls in parts of the city outside the AIA).
- **Fewer Chronic Public Inebriates and problems**
 - 22% of people living in the AIA, and 26% of the retailers, said that the number of persons drinking alcohol in public in their neighborhood has decreased over the past two years. In comparison, fewer than 10% of people living outside the AIA or on the boundaries said that the number of persons drinking alcohol in public has decreased.
 - 25% of people living in the AIA, and 21% of the retailers, said that the problem of chronic public inebriation has decreased compared with two years ago. In comparison, only 7% of people living outside the AIA or on the boundaries said that that the problem has decreased.
 - 19% of people living in the AIA, said that the number of persons urinating or defecating in public places in their neighborhood has decreased compared with two years ago. In comparison, only 8% of people living outside the AIA or on the boundaries, said they saw a decrease.
 - Community volunteers reported less panhandling and less evidence of chronic public inebriates in the AIA area.
- **Less trash and litter from chronic public inebriates.**
 - Community volunteers involved in neighborhood litter patrols reported a significant decrease in the number of bottles, cans and other street trash.
 - 31% of people living in the AIA, and 31% of retailers, said that the amount of trash and litter due to chronic inebriation in their neighborhood has decreased over the past two years. In comparison, only 10% of people living outside the AIA or on the boundaries, said the amount of trash or litter due to chronic public inebriation in their neighborhood has decreased.
- **Community residents feel safer and better about their neighborhood.**
 - Over 25% of people living within the AIA said, compared with two years ago, they feel safer in their neighborhood now.
 - Almost 45% of people living within the AIA said that over the past two years their neighborhood has changed for the better, and only 8% said for the worse.
 - Community volunteers in the focus group reported that they feel better about their neighborhood and felt that the AIA policy has significantly reduced the problem of chronic public inebriation in their community.

Study Conclusion

The evaluation results suggest that the AIA rules have been effective at achieving most of the goals of dealing with the problem of chronic public inebriation. Some of the results are quite strong, especially the reductions in police service calls within the AIA, the decreases in alcohol related emergency medical services incidents and detoxification facility admissions, and the public perceptions of changes in problems associated with chronic public inebriation.

While the evaluation finds several indicators of positive change in the Tacoma AIA, it is not possible to conclude that all the changes are due solely to the AIA itself. It is possible that some of these changes may have occurred even without the AIA. There were a number of other things happening to deal with the problem of chronic public inebriation, including volunteer efforts to clean up street litter, increased police participation in dealing with the CHRONIC PUBLIC INEBRIATE problem, downtown urban revitalization efforts, and the provision of more services with the opening of the new Tacoma Rescue Mission.

In summary, it is probable that the AIA restrictions are just one aspect of an entire community wide effort to deal with chronic public inebriation. Putting the AIA restrictions in place strengthened the community wide efforts and gave others more motivation to deal with the problem of chronic public inebriation.

Purpose

Overview

The purpose of the Alcohol Impact Area (AIA) rules is to establish a framework under which the Board, in partnership with local government and community organizations, can act to mitigate negative impacts on a community's welfare, health, peace, or safety that result from the presence of chronic public inebriation.

Goal

The overall goal of the AIA is to deal with the negative effects and problems associated with Chronic Public Inebriation (CPI). For the purpose of these rules, chronic public inebriation exists when the effects of the public consumption of alcohol and/or public intoxication occur in concentrations that endanger the welfare, health, peace, or safety of a neighborhood or community.

Strategies

- Designate an Alcohol Impact Area (AIA) in the urban core part of the city of Tacoma.
- Restrict the sales of high alcohol content, low-cost beer and wine for off-premises (to go) sales.
- Involve community residents, social service agencies, police, and other public services in helping to mitigate the negative effects of chronic public inebriation.

Target Group

Chronic public inebriates, defined as persons with a severe alcohol problem who are frequently drunk in public.

Causal Statement

If the alcohol products desired by chronic public inebriates are not available to them, then they will do one or more of the following:

- Not buy any alcohol products
- Buy different alcohol products
- Go outside the area to buy desired products
- Leave the area altogether
- Seek treatment
- Take other possible actions

Outcomes

A number of outcomes in the AIA are possible including:

- Fewer chronic public inebriates and problems
- Reduced intoxication levels among chronic public inebriates
- Less trash and litter from chronic public inebriates
- Fewer incidents of public drunkenness
- Fewer alcohol related problems
- Community residents who feel safer and happier
- Other unanticipated outcomes

Background and Purpose

AIA Alcohol Impact Area Urban core area of the City of Tacoma

To evaluate the effects of the designation of an Alcohol Impact Area in the city of Tacoma, Washington.

Background

Citizen complaints about the problem of chronic public inebriation in the city of Tacoma resulted in a city ordinance recommending the establishment of an alcohol impact area in the urban core part of the city of Tacoma.

Under Washington Administrative Code (WAC) 314-14-20 through WAC 314-12-225, the Washington Liquor Control Board can act to mitigate the negative impacts on a community that result from the presence of chronic public inebriation. In October 2001 the City of Tacoma requested that an Alcohol Impact Area (AIA) be designated (described in Ordinance No. 26869) and that alcohol products linked to the problems associated with chronic public inebriation be banned from sale within the AIA area.

The Alcohol Impact Area includes the urban core area of the city:

- Bounded on the north by Schuster Parkway and North 30th Street
- Bounded on the west by Alder Street
- Bounded on the south by State Route 16 and Interstate 5
- Bounded on the east by Port of Tacoma Road, State Route 509, and East "D" Street, to the end of the City of Tacoma limits.

This is approximately 6 square miles.

Effective March 1, 2002 retail establishments with liquor licenses in the AIA were barred from selling certain beer and wine products for off-premises sale ("to go"). On January 15, 2003 several additional beer and wine products were added to this list of banned products. See page 56 for the list of products.

Purpose

WAC 314-12-220 provides that a study of the effectiveness of the AIA rules is to be conducted one year after the WSLCB's recognition of the first AIA. The main goals of this evaluation include:

- Determine whether there have been any significant changes in the negative impacts of chronic public inebriation (CPI).
- Gather information and data on retailers' marketing practices and buying habits of chronic public inebriates that will help the community and the WSLCB evaluate which restrictions might be effective in addressing problems of chronic public inebriation.

- Develop standards and guidelines to measure the effectiveness of AIA restrictions.
- Study is not intended to evaluate the effectiveness of any treatment or other social services that chronic public inebriates may have received.

Another main goal of the evaluation of the Tacoma AIA is that this be done objectively and using established evaluation research methods. However, the evaluation had limited choices of research design because it was designed and conducted after the rules had already been implemented.

Justification

There is substantial justification for the AIA policies in the research literature on risk and protective factors associated with the prevention of drug and alcohol problems. Two researchers at the University of Washington, J. David Hawkins and Rick F. Catalano have conducted research to identify those risk factors that increase the likelihood of substance abuse, and those factors that protect against the likelihood of substance abuse.

Among the community risk factors that they identify as increasing the likelihood of substance use are:

- The availability of drugs and alcohol
- Community laws and norms favorable toward alcohol and drug use
- Low neighborhood attachment and community disorganization

AIA policies that effectively reduce the availability of alcohol to chronic public inebriates are thereby reducing one of the main risk factors of excessive alcohol use.

Additionally, community efforts to deal with the effects of chronic public inebriation are protective factors that reduce the likelihood of alcohol and drug use. In the AIA these community efforts have included such things as voluntary efforts to clean up litter, police patrols that deal with chronic public inebriates using liquor in public places, and retailers voluntarily signing Good Neighbor Agreements to not sell alcohol products to inebriated individuals.

Donald Lachman, a consultant, working with the Substance Abuse Long Term (SALT) Planning Group, in Tacoma and Pierce County, has suggested that “opportunities exist to advance both short and long-term improvements to the systems responding and managing chronic street populations.”

Evaluation Design

Work by SALT and Lachman in Tacoma shows that the chronic street population is diverse, mixed, and growing, with the majority residing within about a 3-mile radius within the city of Tacoma. SALT maintains that “substance abuse is the major destabilizing condition among the chronic street population, which costs Tacoma/Pierce county millions of dollars a year using costly medical, criminal justice and emergency services as a primary response, particularly chronic public inebriates.” SALT also notes that “current responses to the chronic street population have been ineffective in significantly changing criminal and uncivil behaviors and conditions that denigrate neighborhood livability.”

The AIA restrictions on high alcohol content, low-cost beverages represent an untested, but viable approach to changing environmental conditions that encourage changes in the behavior of chronic public inebriates.

Evaluation Design

This evaluation uses two basic research designs, commonly used in evaluation research (Mohr, 1995). The first is sometimes known as the “one-shot case study” diagrammed as:

T Y

Where T = treatment or implementation of the AIA
Y = measurement of effects

The second design is known as a “before-after” design and is diagrammed as:

Y₁ T Y₂

Where T = treatment or implementation of the AIA
Y₁ = measurement before AIA
Y₂ = measurement after AIA

These methods are very commonly used to evaluate social programs. Since it is not possible to use experimental methods with random assignment, commonly used evaluation designs require multiple methods to establish causal links.

The evaluation used multiple methods to obtain information relevant to the issue of assessing the effectiveness of the AIA designation. This is considered good practice in evaluation research (Posavac & Carey, 1997) because of the difficulty of establishing cause and effect in social action research.

Study Components

Surveys:

- **Residents**
- **Retailers**
- **Workers**
- **Beer and Wine Distributors**

For the statistical analysis of data relevant to this evaluation there are three time periods that are important:

Pre-AIA period:
January 1, 2000 to
January 31, 2001

Voluntary Compliance:
February 1, 2001 to
February 28, 2002

AIA Period: March 1,
2002 to March 31, 2003

While restricting the sale of alcohol is not a new practice, there has been no research on the effectiveness of this approach to dealing with the problem of chronic public inebriation in a core urban area such as the Tacoma AIA. This evaluation represents one of the first attempts to study the effectiveness of this approach.

The evaluation of the Tacoma AIA involved the following different approaches:

- A telephone survey of over 200 randomly selected household residents from the city of Tacoma.
- A mail survey of 56 retailers, that have a liquor license to sell alcohol products “to go,” within the AIA boundaries.
- A web survey of people who work in the downtown urban core area of Tacoma.
- A telephone survey of beer and wine distributors in the Tacoma AIA.
- Focus groups of the following, to obtain qualitative information about the effects of the AIA:
 - Community volunteers
 - Community residents
 - Retailers with liquor licenses within the AIA
 - Chronic Public Inebriates at the Tacoma Rescue Mission
 - Chronic Public Inebriates at the Detox facility
- Collection of data prior to and after the AIA implementation, on the following:
 - Monthly number of police service calls for “drunk in public,” “liquor in park,” and other situations.
 - Monthly number of admissions to the Tacoma Detox facility
 - Number of emergency medical service calls in the AIA, and non-AIA parts of Tacoma
- A comparison of changes in gross sales before and after the AIA implementation, on the following:
 - Retailers with liquor licenses to sell alcohol “to go”
 - Beer and wine distributors

Telephone Survey of Community Residents

Telephone Survey of Residents

We conducted a telephone survey of community residents in the AIA neighborhood. The questionnaire included questions about public perceptions of public inebriation in the neighborhood, and about the quality of life in the neighborhood, both before and after the AIA designation.

The sample of residents consisted of a random digit dialing telephone sample of census tract areas inside the AIA boundaries. Since there is not an exact relationship between geographical boundaries and telephone exchanges, some households outside the AIA area may have been included in the survey results. Telephone interviews were conducted with over 200 neighborhood residents. This is large enough to provide a sample error of plus or minus 7%. The telephone interview averaged about 10 minutes in length.

A total of 2,646 phone numbers were called. From these, 1,039 were found to be disconnected or business numbers, another 600 were nonworking numbers or ineligible numbers, leaving 1,007 telephone numbers. From these, 206 interviews were completed and 8 partial interviews were conducted yielding a cooperation rate of 58.15 %. The completion rate adjusted for ineligibility was 26.03 % with a sampling error of +/-6.95 % at the 95% confidence level for the total sample. 154 households refused to participate, 601 households could never be contacted during the survey period, and 38 could not be interviewed because of language or other problems.

The full study training and calling commenced on April 21, 2003 and was completed on May 1, 2003. The call attempts alternated day of the week and time of the day. If an interviewer called at an inconvenient time for the respondent, the interviewer would attempt to schedule a specific time to re-contact the household for an interview.

For the analysis of survey data, respondents were categorized by zip code as living within the AIA or on the boundaries of the AIA. There is not an exact match between telephone exchanges and geographic boundaries. Thus, some survey respondents may live outside the exact AIA geographic boundaries.

A copy of the telephone interview questionnaire is included in the Appendix to this report.

Results of the Telephone Survey

This section summarizes the telephone survey results. Data tables for each of the survey questions can be found in the Appendix to this report.

Q1

34% of residents walk around their neighborhood **about every day**, 37% said a few times a week, 14% about once a week, and 15% less often. There were no significant differences.

Q2

Residents living within the AIA are significantly more likely to notice chronic public inebriates in their neighborhood, than residents living outside or on the boundary of the AIA. 55% living within the AIA versus only 18% living outside the AIA noticing them. The difference is statistically significant at $p < .001$ (Pearson Chi Square 25.55, $df=2$).

Q3

Residents living within the AIA, as compared to those living outside or on the AIA boundary, are also significantly more likely to say that the presence of chronic public inebriates in their neighborhood is a very big problem (14% vs 4%) or somewhat of a problem (22% vs 4%). Only 39% of people living in the AIA say that chronic public inebriates are not a problem compared with 72% living outside the AIA. The differences are statistically significant at $p < .001$ (Pearson Chi Square 25.41, $df=4$).

Q4

Open-ended question: see the Appendix for respondent comments about why they responded the way they did to Q3.

Q5

Over 52% of respondents living in the AIA said they were aware of the AIA restrictions, compared with under 31% of those living outside the AIA. The difference between the two groups of respondents is significant at $p < .01$ (Pearson Chi Square 8.91, $df=1$).

The next set of questions asked respondents about how things have changed in the past two years.

Q6

When asked about the change in the number of persons drinking alcohol in public in their neighborhood, 55% of AIA residents said it has stayed about the same, compared with 69% of those outside the AIA. 22% of residents in the AIA said this had **decreased**, compared with 10% of residents outside the AIA who said it had decreased. The difference was not statistically significant.

Q7

57% of AIA residents, compared with 64% of those outside the AIA, said that the chronic public inebriates in their neighborhood are intoxicated about the same as they were two years ago. Among AIA residents, 8% said they were more intoxicated, and 16% said less intoxicated (19% didn't know). This compares with non-AIA residents, 3% more, 8% less intoxicated, and 25% didn't know).

Q8

When asked about changes in the overall cleanliness of their neighborhood, there were no statistically significant differences between residents of the AIA versus those living outside or on the AIA boundary. About 54% said things were the same, 35% said cleanliness had increased, 8% said it had decreased, and 3% didn't know.

Q9

Asked about changes in the amount of trash and litter due to chronic public inebriates in their neighborhoods, 31% of AIA residents said this had decreased, 10% said increased, and 52% said it was the same (7% don't know). This compares with 14% of non-AIA residents who said it had decreased, 10% said increased, and 65% said it was the same (11% don't know). This difference is statistically significant at $p < .05$ (Pearson Chi Square 7.80, $df=3$).

Q10

AIA residents are also more likely than non-AIA residents to say that they have noticed a change in the kind of trash and litter associated with chronic public inebriates in their neighborhood (26% vs 11% respectively). This difference is statistically significant at $p < .05$ (Pearson Chi Square 6.59, $df=2$).

Q10 Open-End

Open-ended question: see the Appendix for respondent comments about what kinds of changes in trash and litter.

Q11

About twice as many AIA residents as non-AIA residents said that the number of persons urinating or defecating in their neighborhood has decreased in the past two years (19% vs 8% respectively). 7% of AIA residents say this has increased compared with only 1% of non-AIA residents. The difference is statistically significant at $p < .05$ (Pearson Chi Square 9.26, $df=3$).

Q12

Whereas 71% of non-AIA residents said that they have experienced no change in safety over the past two years, only 51% of AIA residents said this. 25% of AIA residents said they feel more safe, compared with 19% of non-AIA residents. But, 18% of AIA residents feel less safe, compared with only 8% of non-AIA residents. These differences are statistically significant at $p < .05$ (Pearson Chi Square 8.44, $df=3$).

Q13	There is no statistically significant difference between AIA residents and non-residents in their opinions about changes in the amount of crime in their neighborhood. About 19% say that crime has increased, 22% say it has decreased, and 45% say it has stayed the same (13% don't know).
Q14	Significantly more AIA residents than non-AIA residents say that the number of persons panhandling in their neighborhood has decreased (28% vs 11% respectively). However, 18% of AIA residents say it has increased, compared with 11% of non-AIA residents. These differences are statistically significant at $p < .01$ (Pearson Chi Square 12.05, $df=3$).
Q15	Significantly more AIA residents than non-AIA residents say that the amount of drug activity in their neighborhood has decreased (24% vs 8% respectively). However, 25% of AIA residents say this has increased, compared with 18% of non-AIA residents. These differences are statistically significant at $p < .01$ (Pearson Chi Square 12.29, $df=3$).
Q16	Over five times as many AIA residents as non-AIA residents say that they have noticed changes in the types of alcohol products consumed by persons drinking in public places in their neighborhood (16% vs 3% respectively). The difference is statistically significant at $p < .01$ (Pearson Chi Square 9.00, $df=2$).
Q16 Open-End	<p><u>Open-ended question:</u> See the Appendix for respondent comments about what kinds of changes.</p> <p>In general, AIA residents see less evidence of malt liquor use, or high alcohol content beer.</p>
Q17	<p>There was no statistically significant difference between AIA and non-AIA residents in whether they had noticed changes in the past two years in how convenience and grocery stores and restaurants and bars in their neighborhood deal with chronic public inebriates. Slightly more AIA residents (19%) versus non-AIA residents (14%) had noticed changes.</p> <p><u>Open-ended question:</u> see the Appendix for respondent comments about what kinds of changes.</p>
Q17 Open-End	<p>Many respondents commented that stores seem to be less tolerant of chronic public inebriates now than they were before.</p>

Q18

Respondents were asked whether their neighborhood had changed for the better, the worse, or whether it has stayed about the same. While not statistically significant, a greater percent of AIA residents than non-AIA residents said that it was better (45% vs 35% respectively), and that it was worse (8% vs 3% respectively).

Q18 Open-End

Open-ended question: see the Appendix for respondent comments about what kinds of changes.

Q19

Respondents within the AIA compared with those outside the AIA are much more likely to say that compared with two years ago, the problem of chronic public inebriates has **decreased** (25% vs 7% respectively). The percentages that say it has increased are very similar among the two groups (7% vs 4% respectively). 56% of AIA residents say that the problem of chronic public inebriates has stayed about the same, compared with 75% of non-AIA residents. 12% and 14% respectively say they don't know. The differences are statistically significant at $p < .01$ (Pearson Chi Square 11.77, $df=3$).

Q20 Open-End

Open-ended question: see the Appendix for respondent comments about why respondents answered Q19 the way they did.

The survey included several demographic questions at the end. There was only one significant difference between the AIA and non-AIA residents on these questions. AIA residents were significantly more likely than non-AIA residents to be living in single-person households (45% vs 22% respectively). This difference is statistically significant at $p < .05$ (Pearson Chi Square 11.50, $df=5$).

About 32% of both AIA and non-AIA residents said that they belong to an organization, such as a church, service club, or other community group that helps deal with some of the kinds of issues the survey mentioned.

About 40% of respondents from both groups were male, and 60% were female.

Open-Ended Comments

Survey respondents were given an opportunity to elaborate on their responses.

Here are representative comments made by respondents in the telephone survey.

Telephone Survey of Community Residents

Q4 How much of a problem is the presence of chronic public inebriates in your neighborhood, to you, and why do you feel this way?

"CPIs are throwing up, passing out on the sidewalk, sleeping in the park, soliciting money off people, and being a general nuisance."

"There are little kids around and the people drinking, or whatever, don't set a good example."

"Because they're coming along, panhandling, disturbing the peace, and yelling and screaming."

"They get loud and noisy and fight sometimes they make themselves a nuisance and call people names."

"She shouldn't have to walk in her neighborhood and see drunks and panhandlers, not to mention the filth that comes along with them. the garbage and broken glass is a safety hazard."

"Makes me uncomfortable because people under the influence are more likely to do things that scare me. Plus I work in a public place where I see them more often."

it used to be real bad but the cops have been patrolling really well. they're doing a good job.

Q10 Compared with two years ago, what changes if any have you noticed in the kind of trash and litter associated with chronic public inebriates in your neighborhood?

"There isn't a whole lot of trash as opposed to a few years ago."

"Used to find liquor bottles in her bushes, and she doesn't see that anymore."

"Decreased; you don't see the brown bags with the bottles anymore."

"We don't have the beer and wine containers that we had before."

"Respondent notices trash in different places because they move around."

"More bottles than usual, depends on the weekend. summers are worse than winters."

"We don't have the beer and wine containers that we had before."

"They used to have bottles in a brown paper bag. the high proof liquor from convenience stores. but now it's a lot cleaner."

Q16 Compared with two years ago, what changes if any have you noticed in the types of alcohol products consumed by persons drinking in public places in your neighborhood?

“Less malt liquor, they have to go further to get it.”

“There are a lot less of the cheap malt liquor bottles laying around.”

“Not drinking the same high test beer, just regular beer now.”

“Mostly beer now.”

“I've noticed that they don't drink as many 40oz beers or larger amounts of alcohol; just smaller amounts.”

“Inebriates now buy whatever other cheap stuff they can get.”

“Don't drink steel reserve anymore.”

“They are drinking weaker beer.”

Q17 Compared with two years ago, what changes if any have you noticed in how convenience and grocery stores, and restaurants and bars in your neighborhood deal with chronic public inebriates?

“They're not hanging around the places. One of the local stores doesn't sell cheap alcohol anymore.”

The grocery store down the street is less tolerant of the drunks.”

There has been a zero tolerance policy around the grocery stores and they are keeping things clean, and there has been a crack down on loud music.”

They close that side of the grocery store that has the alcohol, so you can't just walk in and out of it.”

They don't allow people hanging out outside drunk. it's enforced heavily.”

Most stores don't allow panhandlers to hang outside.”

“There's less intoxicated inebriated people.”

“The grocery stores have stopped selling 24 oz bottles of beer-they have to buy more than they can afford-so they don't. The bars stopped selling to people that are overly intoxicated.”

“More of the convenience stores and bars don't sell alcohol to persons who are intoxicated or who appear to be.”

“It's gotten better.”

Q18 Over the past two years, how would you say that your neighborhood has changed?

“Formed a neighborhood watch group, better relationship with the police department.”

“It’s cleaner, people that he used to see drunk all the time are sober more often now.”

“The houses around the neighborhood that sell drugs aren’t there any more.”

“Several of the inebriates that used to be there are gone.”

“They are fixing up the apartments and homes in her neighborhood. It is getting better due to the change in people in her neighborhood. And the drinkers have shifted to farther away from her neighborhood.”

“Several of the inebriates that used to be there are gone.”

“Seems a little more clean, cops more likely to respond to problems more quickly.”

“Everyone is working together in keeping the neighborhood safe. there is no tolerance for inebriates.”

“There seems to be a lot of participation from the people who live there. There are a lot of public forums, church events on the weekends, and people get out and meet each other.”

“All the neighbors are working to get the inebriates out of their neighborhood.”

“Police dept is really good-they patrol the park on their bicycles, which helps deter bad things from happening. community seems to be closer than before.”

“There aren’t as many drunks all over the place.”

“The CPI’s have gone elsewhere to drink.”

“There are fewer people just wandering around.”

“A lot of the real chronic trouble makers have left, and there is only about 10% bad element.”

“Feel more safe, cleaner, more police.”

“More chronic public inebriates over the past 5 years.”

“Doesn’t seem like there is as much bumming, panhandling, etc as before.”

Q20 Compared with two years ago, why would you say that the problem of chronic public inebriation in your neighborhood has . . . (increased/decreased/stayed the same)

"It's just been cleaned up effectively."

"There's not as many people here getting drunk as before."

"Respondent noticed that the few inebriates that he did notice have moved to a different neighborhood."

"I just don't see the drunks hanging out anymore."

"Sees a better, safer place, where things are trying to improve, so things are getting there. They are not there yet, but it is better."

"We always see someone walking down the street drunk, the same as two years ago."

"He is out everyday and still sees it everyday. There are regulars for the most part, and most are homeless and lack skills and public assistance, and until that changes, they will still be there."

"You don't see as many people just sitting there in the parking lots or in the park with a bag in their hands. The Wright park is by where she lives and they send more cops by there recently patrolling."

"Don't know why but it may be because the city has worked on it a lot and talked with the shops and storekeepers. All the drinking stays where it should be - in the bars and clubs."

"Respondent hasn't seen that many differences. The same people are out in the alley."

"Respondent doesn't see more people doing this, she sees the same ones."

"If it has changed, she hasn't noticed. anytime she goes around on foot, she will see at least one person."

"Doesn't think that it has lessened, but just moved to where the alcohol is now."

"She sees them every day and it's towards the evening and she's had to chase them off her own property, they need to crack down and stop selling liquor and only sell it in nightclubs - make it less accessible."

"There used to be 6 to 8 people across the street getting drunk in the middle of the night. not any more."

**Mail Survey of
AIA Retailers
with Liquor
Licenses to Sell
Alcohol “To Go”**

Mail Survey of Retailers

We designed a mail survey of retailers holding liquor licenses in the AIA to evaluate the perceptions of the effects of the AIA designation on retailers. The mailing included a short 4-page booklet questionnaire, a cover letter, and a self-addressed, stamped return envelope. This was mailed to retail owner/managers who were asked to return a completed questionnaire to SESRC.

For Korean retail owner/managers, we obtained the help of the WSLCB staff to prepare a Korean translation of this questionnaire.

Retailers were mailed the questionnaire, cover letter, and stamped return envelope in early April 2003. Two weeks later we conducted telephone followup calls of nonrespondents to encourage them to complete and return the questionnaire.

The questionnaire was mailed to the 50 retail establishments located in the AIA area, to the two state liquor stores in the AIA area, and to the four additional retailers within five blocks of the AIA boundaries.

From these, 19 retailers completed and returned the survey, for a 34% response rate.

The questionnaire included almost identical questions to those used in the telephone survey of community residents, but adapted for the AIA retailers. A copy of the mail questionnaire for this survey is included in the Appendix to this report.

Results of the Mail Survey of Retailers

This section summarizes the survey results from AIA retailers. Data tables for each of the survey questions can be found in the Appendix to this report.

Q1

Most retailers did not view the presence of “street drinkers” to be a very big problem. 26% said that they are **not a problem**, and 58% said they are **only a slight problem**.

Q2 Open-End

Open-ended question: see the Appendix for respondent comments about why they responded the way they did to Q1.

Most comments reiterated the point that chronic public inebriates were not much of a problem for retailers.

Q3

All AIA retailers who responded to the survey said that they were aware of the AIA restrictions on the sale of alcohol products. None said that they were not aware of them.

Q4 Open-End

Open-ended question: see the Appendix for respondent comments about how they learned about the product restrictions imposed by the WSLCB.

Most retailers learned about the restrictions from the letter received from the WSLCB.

Q5

Retailers were asked if their alcohol distributor provided any advice on how to deal with these restrictions. 50% said yes they had, and 50% said no.

Q6 Open-End

Open-ended question: see the Appendix for respondent comments about what kinds of advice they said they got from alcohol distributors.

Most of the advice received was simply to follow the instructions contained in the WSLCB letter and not to sell the restricted products.

The next set of questions asked respondents about how things have changed in the past two years.

Q7

When asked about the change in the number of chronic public inebriates in their neighborhood, 58% of AIA retailers said it has stayed about the same, (this compares with 55% of community residents). 26% of retailers said this had **decreased**, (this compares with 22% of community residents). Among the two liquor stores, one said that the number of chronic public inebriates has decreased, and one said increased.

Q8

63% of retailers said that the regular chronic public inebriates in their neighborhood are now intoxicated about the same as compared with two years ago (this compares with 57% of AIA residents). 26% of retailers said that the regular chronic public inebriates are now less intoxicated (compared with 16% of AIA residents who said this). No retailers said that chronic public inebriates were now more intoxicated (compared with 8% of AIA residents who said they were more intoxicated).

Q9

When asked about changes in the overall cleanliness of their neighborhood, 63% of retailers said that things were about the same now as compared with two years ago (this compares with 54% of AIA residents). About 32% said cleanliness had increased (compared with 35% of AIA residents), and no retailers said it had decreased (compared with 8% of AIA residents who said it had decreased).

Q10

Asked about changes in the amount of trash and litter due to chronic public inebriates in their neighborhoods, 32% said this had decreased (compared with 31% of AIA residents), 5% said it had increased (compared with 10% of AIA residents), and 53% said it was the same (compared with 52% of AIA residents who said it was the same).

Q11

Only 33% of AIA retailers said that they have noticed a change in the kind of trash and litter associated with chronic public inebriates in their neighborhood (compared with 26% of AIA residents who said this).

Q11 Open-End

Open-ended question: see the Appendix for respondent comments about what kinds of changes in trash and litter.

Most comments are about the fewer numbers of empty bottles and containers that retailers see.

Q12

About 22% of AIA retailers said that the number of persons urinating or defecating in their neighborhood has decreased in the past two years (compared with 19% of AIA residents). Only 6% of retailers said this has increased (compared with 7% of AIA residents). 56% of retailers said that things are about the same as two years ago (compared with 42% of AIA residents).

Q13

74% of AIA retailers said that they have experienced no change in their feelings of safety over the past two years (compared with 51% of AIA residents). Only 5% of retailers said they feel more safe (compared with 25% of AIA residents). But, 10% of retailers said they feel less safe (compared with 18% of AIA residents).

Q14

When asked about changes in the amount of crime in their neighborhood, about 26% of AIA retailers said that crime has increased (compared with 19% of AIA residents). Only 5% of retailers said it has decreased (compared with 22% of AIA residents), and 42% said it has stayed the same (compared with 45% of AIA residents). 26% of retailers said don't know (compared with 13% of AIA residents).

Q15

Only 17% of AIA retailers said that the number of persons panhandling in their neighborhood has **decreased** (compared with 28% of AIA residents). However, 11% said it has increased (compared with 18% of AIA residents). Most retailers (62%) said it has stayed about the same (43% of AIA residents).

Q16

21% of AIA retailers said the amount of drug activity in their neighborhood has **decreased** (compared with 24% of AIA residents). However, 15% of retailers said it has increased (compared with 25% of AIA residents). 37% said it has stayed about the same (compared with 35% of AIA residents).

Q17

Most (61%) of AIA retailers said that they have noticed no changes in the types of alcohol products consumed by persons drinking in public places in their neighborhood (compared with 71% of AIA residents). 17% of retailers have noticed changes (compared with 16% of AIA residents). Both of the liquor stores included in the survey said that they have noticed no changes in the types of alcohol products purchased by chronic public inebriates.

Q17 Open-End

Open-ended question: See the Appendix for respondent comments about what kinds of changes.

AIA retailers said that some chronic public inebriates have changed the products they are buying.

Q18

21% of retailers said they had noticed changes in the past two years in how convenience and grocery stores and restaurants and bars in their neighborhood deal with chronic public inebriates (this compares with 19% of AIA residents). 63% said they had not seen any changes (compared with 70% of AIA residents).

Q18 Open-End

Open-ended question: see the Appendix for respondent comments about what kinds of changes.

Many comments said that stores sell less to chronic public inebriates than before.

Q19

Respondents were asked whether their neighborhood had changed for the better, the worse, or whether it has stayed about the same. 17% of AIA retailers said it was **better** and 28% said it was **worse** (the comparable percentages for AIA residents are 45% better and 8% worse). 33% of retailers said it has stayed about the same (compared with 43% of AIA residents.)

Q19 Open-End

Open-ended question: See the Appendix for respondent comments about why they feel their neighborhood has gotten better or worse.

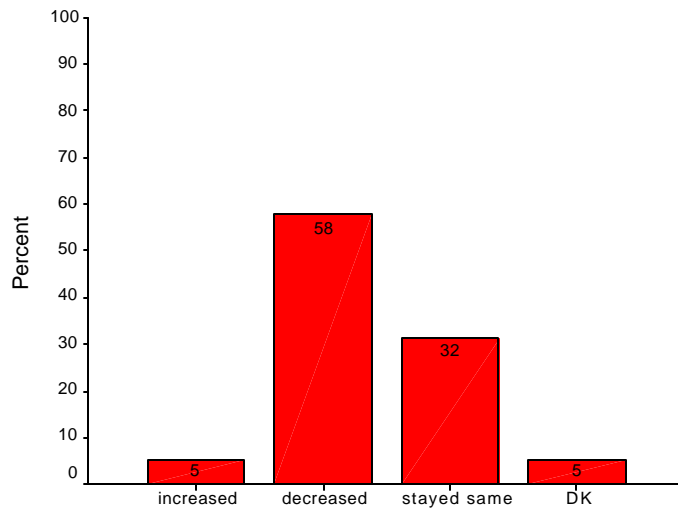
Q20

None of the AIA retailers said that the problem of chronic public inebriation has increased in their neighborhood over the past two years (compared with 7% of AIA residents). Most retailers said it has stayed about the same (63%, versus 56% for AIA residents). 21% of retailers said it has **decreased** (compared with 25% of AIA residents).

Q20 Open-End

Open-ended question: See the Appendix for respondent comments about why respondents answered Q20 the way they did.

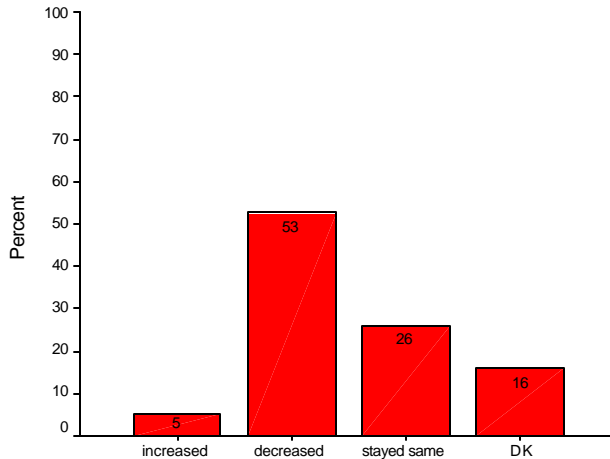
AIA retailers were asked several questions about changes in their business over the past two years.



Q21. Change in amount of alcohol sold

Q21

The majority of AIA retailers (58%) said that the amount of alcohol sold at their business has **decreased** over the past two years.



Q22. Change in number of CPI buying alcohol

Q22

The majority of AIA retailers (53%) said that the number of chronic public inebriates purchasing alcohol at their business has **decreased** over the past two years.

Q23

Equal percentages of AIA retailers said that as compared with two years ago, they have (44%) and have not (44%) seen changes in the type of alcohol sold by their business (12% said don't know).

Q23 Open-End

Open-ended question: See the Appendix for respondent comments about what changes in the types of alcohol sold by retailers.

Q24

The majority of AIA retailers (83%) said they have seen **no** changes in the demographic characteristics of their customers as compared with two years ago. 6% said they have seen a change, and 11% said don't know.

Q24 Open-End

Open-ended question: See the Appendix for respondent comments about what changes in customers.

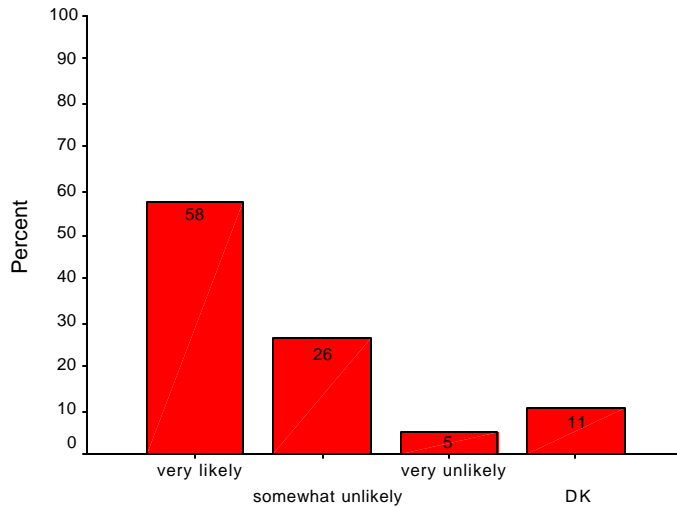
Only two retailers responded to this question, and one made the comment that they now see "nicer people" and the other said they "lost many customers."

Q25

38% of AIA retailers said that they do see changes in the kinds of alcohol that chronic public inebriates are buying from their store, but 50% said they see no change (12% don't know).

Q25 Open-End

Open-ended question: See the Appendix for respondent comments about what changes they saw.



Q26. Likelihood that CPI buy single can/bottle

Q26

The majority of AIA retailers (84%) said that in their experience, chronic public inebriates are **very or somewhat likely** to buy beer by the single can or single bottle. Only 5% of retailers said very unlikely.

Q27

63% of AIA retailers said that they had been approached and asked to sign a Good Neighbor Agreement (GNA) as part of a voluntary effort to control chronic public inebriation. 26% said no they had not been approached, and 11% said they didn't know.

Q28

Half of those who said they had been approached about signing the GNA said they did sign it, and the remainder said they did not sign it.

Q29 Open-End

Open-ended question: See the Appendix for respondent comments about why they didn't sign the GNA.

Q30 Open-End

Open-ended question: Retailers were asked about what business practices they believed convenience and grocery stores, restaurants and bars could use that might be more effective in controlling chronic public inebriation than the restrictions imposed by the WSLCB.

Suggestions varied from expanding the AIA to the entire city, to more policing, not selling to chronic public inebriates, not selling anything less than a 6-pack, to giving chronic public inebriates more places to eat and sleep.

Web Survey of People Working in the Urban Core Area of Tacoma

Web Survey of Workers

We designed a web survey containing questions very similar to those used for the telephone survey. This was directed at employees of businesses located within the AIA geographic region. The web survey was posted on the SESRC website. To encourage response to this survey, the letter informing people about the survey also mentioned that all respondents would be entered into a drawing for a cash prize of \$50.

The City of Tacoma's Economic Development Department provided a list of over 150 businesses located within the AIA area, to which we mailed a letter inviting them to participate in the web survey. The Tacoma Chamber of Commerce also agreed to distribute a copy of the letter to its members with a request that the letter be distributed to their employees.

The sample of respondents to the web survey is self-selected, and cannot be considered a random sample of the eligible population of AIA business employees. However, the methods used to conduct this survey are relatively inexpensive and allowed people who are employed in the AIA area an opportunity to give their input on this survey. We do not know what biases there may exist in the results of this survey, and so we will not generalize the results to all business employees within the AIA area.

A total of 165 people responded to the web survey through the end of the first week of June 2003. A copy of the questionnaire is included in the Appendix.

Results of the Web Survey of People Employed in the AIA

This section summarizes the web survey results. Data tables for each of the survey questions can be found in the Appendix to this report.

Q1

44% of workers walk around their neighborhood **about every day** (compared with 34% of AIA residents), 26% said a few times a week (compared with 37% of AIA residents), 8% about once a week (compared with 14% of AIA residents), and 20% less often (compared with 15% of AIA residents).

Q2

Workers in the AIA are more likely to notice chronic public inebriates in their neighborhood, than AIA residents. 81% of workers versus 55% of AIA residents, and only 18% living outside the AIA notice chronic public inebriates.

Q3

Workers in the AIA are also more likely to say that the presence of chronic public inebriates in their work neighborhood are a very big problem (36%) or somewhat of a problem (36%) than are AIA residents (14% and 22% respectively). Only 4% of workers, compared with 39% of people living in the AIA, said that chronic public inebriates are not a problem. This compares with 72% living outside the AIA. Only 17% of workers said that chronic public inebriates were a slight problem.

Q4

Open-ended question: see the Appendix for respondent comments about why they responded the way they did to Q3.

Q5

70% of workers said they were aware of the AIA restrictions on alcohol (this compares with 52% of AIA residents, and 31% of non-AIA residents).

The next set of questions asked respondents about how things have changed in the past two years.

Q6

When asked about the change in the number of persons drinking alcohol in public in their neighborhood, 30% of workers said it has stayed about the same (compared with 55% of AIA residents and 69% of non-AIA residents). 25% of workers said this has **decreased** (this compares with 22% of AIA residents, and 10% of non-AIA residents). However, 20% of workers say that the numbers have increased over the past two years (this compares with 7% of AIA residents and 4% of non-AIA residents).

Q7

43% of workers (57% of AIA residents, and 64% of non-AIA residents) said that the chronic public inebriates in their neighborhood are intoxicated about the same as they were two years ago. Among workers 11% said they were more intoxicated (8% among AIA residents, 3% among non-AIA residents). 14% of workers said they were less intoxicated (compared with 16% among AIA residents and 8% among non-AIA residents).

Q8

When asked about changes in the overall cleanliness of their neighborhood, about 32% said things were the same, 37% said cleanliness had increased, 23% said it had decreased, and 8% didn't know. (Among telephone survey respondents the percentages are 54%, 35%, 8%, and 3% respectively).

Q9

Asked about changes in the amount of trash and litter due to chronic public inebriates in their neighborhoods, 25% of workers said this had decreased, 29% said increased, and 30% said it was the same (17% don't know). Among AIA residents these percentages are 31% decrease, 10% increase, 52% stayed the same (7% don't know). Among non-AIA residents the percentages are 14%, 10%, and 65% respectively (11% don't know).

Q10

About 30% of workers said that they have noticed a change in the kinds of trash and litter associated with chronic public inebriates in their work neighborhood (compared with 26% of AIA residents and 11% of non-AIA residents). 35% of workers said they didn't know.

Q10 Open-End

Open-ended question: see the Appendix for respondent comments about what kinds of changes in trash and litter.

Q11

About 17% of workers said that the number of persons urinating or defecating in their neighborhood has **decreased** in the past two years (19% among AIA residents and 8% among non-AIA residents). But 27% of workers said this has increased (7% among AIA residents and only 1% of non-AIA residents). 22% of workers said this number has stayed about the same, and 35% said didn't know.

Q12

47% of workers say they have experienced no change in safety over the past two years (compared with 51% of AIA residents and 71% of non-AIA residents). 17% of workers say they feel more safe (25% among AIA residents and 19% among non-AIA residents). But, 29% of workers feel **less safe** now than two years ago (18% among AIA residents and 8% among non-AIA residents).

Q13

Among workers in the AIA, about 20% said that crime has increased, 11% said it has decreased, and 24% said it has stayed about the same (45% said don't know). Among telephone survey respondents these percentages are about 19% say that crime has increased, 22% say it has decreased, and 45% say it has stayed the same (13% don't know).

Q14

About 30% of workers in the AIA said that the number of persons panhandling in their work neighborhood has **increased**, 17% say it has decreased, and 32% said there has been no change in the past two years (21% said don't know). Among AIA residents the percentages are 18%, 28%, and 43% (10% don't know). Among non-AIA residents the percentages are 11%, 11%, and 64% (14% don't know).

Q15

About 44% of workers in the AIA said that the amount of drug activity in their work neighborhood has **increased**, 10% say it has decreased, and 12% said there has been no change in the past two years (35% said don't know). Among AIA residents the percentages are 25%, 24%, and 35% (16% don't know). Among non-AIA residents the percentages are 18%, 8%, and 57% (17% don't know).

Q16

Only 8% of workers in the AIA said that they have noticed changes in the types of alcohol products consumed by persons drinking in public places in their neighborhood (Among AIA residents, 16% and among non-AIA residents 3% have noticed changes).

Q16 Open-End

Open-ended question: see the Appendix for respondent comments about what kinds of changes.

In general, workers in the AIA see less evidence of beer and wine containers.

Q17

Only 8% of workers in the AIA said that they have noticed changes in how convenience and grocery stores, and restaurants and bars in their work neighborhood deal with chronic public inebriates. (Among AIA residents, 19% and among non-AIA residents 14% have noticed changes).

Open-ended question: see the Appendix for respondent comments about what kinds of changes.

Q17 Open-End

Many comments said that stores are selling less alcohol to chronic public inebriates now than they were before.

Q18

Workers in the AIA were asked whether their neighborhood had changed for the better, the worse, or whether it has stayed about the same. Among workers, 29% said things had gotten **better**, 30% said worse, and 34% said things had stayed the same (7% don't know). Among AIA residents the same percentages are 45% better, 8% worse, and 43% stayed the same (4% don't know). Among non-AIA residents the percentages are 35%, 3%, and 61% respectively (1% don't know).

Q18 Open-End

Open-ended question: see the Appendix for respondent comments about what kinds of changes.

Q19

Asked whether as compared with two years ago, the problem of chronic public inebriation had increased, decreased, or stayed the same, workers in the AIA were most likely to say that it had stayed the same (36%). However, 20% said it had increased, and 18% said it had **decreased** (26% said don't know). Among AIA residents these percentages are 56%, 7%, and 25% respectively (12% don't know). Among non-AIA residents these percentages are 75%, 4%, and 7% (14% don't know).

Q20 Open-End

Open-ended question: see the Appendix for respondent comments about why respondents answered Q19 the way they did.

Q21

Workers in the AIA were asked whether their business attempted to do anything to deal with the issue of chronic public inebriation or with some of the kinds of alcohol issues mentioned in the survey. 43% said yes, 22% said no, and 35% said they didn't know.

Q22 Open-End

Open-ended question: see the Appendix for respondent comments about the kinds of things that workers say their businesses are doing to deal with the problem of chronic public inebriation.

The survey included a few demographic questions at the end.

About 74% of web survey respondents are female, and 26% are male.

22% of web respondents are under 30 years of age, 20% are between 31 and 40, 28% are between 41 and 50, 23% are between 51 and 60, and 7% are 61 or older.

Summary of Survey Results

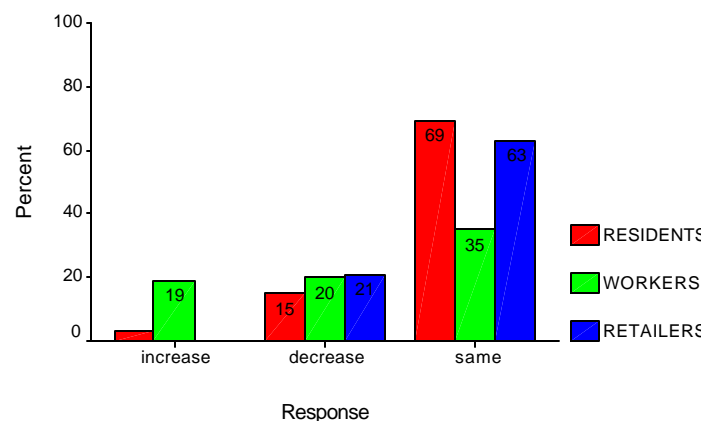
Surveys of Community Residents, Workers, and Retailers

- Within the AIA area there is widespread awareness of the AIA restrictions: 43% of residents, 82% of workers, and 100% of retailers, responding to the surveys, said that they were aware of the AIA restrictions.
- 45% of AIA area residents report that things have changed for the **better** over the past two years, compared with only 4% who say for the worse.
- 15% of AIA residents report that over the past two years, the problem of chronic public inebriation has **decreased**, versus 3% who say that it has increased.
- 37% of AIA residents, 41% of AIA workers, and 32% of AIA retailers say that compared with two years ago, the overall cleanliness of the neighborhood has **increased**.
- Only 8% of AIA residents, 23% of AIA workers, and 0% of AIA retailers say that compared with two years ago, the overall cleanliness of the neighborhood has decreased.
- 26% of retailers that sell alcohol in the AIA area say that the regular chronic public inebriates in their neighborhood now seem **less often intoxicated** than they were two years ago. None of the retailers surveyed said that CPIs are more often intoxicated.

Compared with two years ago

The problem of Chronic Public Inebriation has

Increased, decreased, or stayed about the same



A greater percent of community residents, workers, and retailers said that the problem of chronic public inebriation has **decreased**, rather than increased in comparison to two years ago.

Telephone Survey of Residents

Community residents see substantial improvements on several measures, in comparison to two years ago.

Mail Survey of Retailers

Retailers also see substantial improvements on several measures, in comparison with two years ago.

Web Survey of Workers

The respondents to the web survey of workers are **self-selected, and thus they may not accurately represent all Tacoma workers.** and their opinions tend to be quite different from those of community residents and AIA retailers.

Survey questions asked community respondents to consider how several aspects of their community had changed as compared with two years ago.

A greater percentage of community residents felt that the following aspects of their community had changed in comparison to two years ago.

- Fewer problems of chronic public inebriation
- Less crime
- Fewer people panhandling
- Less trash and litter in the neighborhood
- A cleaner neighborhood
- Less intoxication among chronic public inebriates
- Fewer persons urinating in public
- Feel more safe in the neighborhood

The same survey questions were asked of AIA. A greater percentage of AIA retailers felt that the following aspects of their community had changed in comparison to two years ago.

- Fewer problems of chronic public inebriation
- More crime
- Fewer people panhandling
- Less trash and litter in the neighborhood
- A cleaner neighborhood
- Less intoxication among chronic public inebriates
- Fewer persons urinating in public
- Feel less safe in the neighborhood

The same survey questions were asked in the web survey of people working in the AIA. A greater percentage of people working in the AIA felt that the following aspects of their community had changed in comparison to two years ago.

- More problems of chronic public inebriation
- More crime
- More people panhandling
- More trash and litter in the neighborhood
- A cleaner neighborhood
- Less intoxication among chronic public inebriates
- More persons urinating in public
- Feel less safe in the neighborhood

Differences among these groups in their perceptions of what has changed may be because retailers and workers may have more exposure to CPIs than residents. Differences in survey methods may be another explanation.

Telephone Survey of AIA Beer and Wine Distributors

Telephone Calls to Beer and Wine Distributors

We attempted to contact all of the six beer and wine distributors that deliver in the AIA area. The purpose of these contacts was to assess the perceived impact of the AIA restrictions on their businesses. This survey is intended to evaluate differences in sales and market trends that may be indicative of a dispersion effect or substitutions of products similar to the restricted products.

We also contacted the managers of the two state liquor stores in the AIA area, to obtain similar information.

- Beer and wine distributors were asked if they would share data on beer and wine sales for the pre-AIA and the post-AIA time period. Only one was able to provide data.
- Three of the five distributors contacted reported that their sales within the AIA area have decreased, one by as much as 16%. Two distributors reported an increase in sales within the AIA since the AIA restrictions went into effect.
- In general distributors report no changes in sales to retailers located on the boundaries of the AIA, with the exception of one who reported a large increase in sales.
- Only one of the five distributors contacted believed that the AIA policy could be effective at dealing with the problem of chronic public inebriation.
- For the one distributor providing sales data, the average number of cases of beer and wine sold in the pre-AIA time period (from March 2001 through February 2002) is 9,258 cases. The average number of cases sold in the AIA time period (from March 2002 through February 2003) is 11,050 cases. The difference is statistically significant ($t=2.865$ at $p < .01$).
- There has been an approximately 20% increase in sales for this anonymous distributor between the pre-AIA and the post-AIA time period, suggesting that the AIA designation had no significant impact on sales revenue, at least for this distributor.

Statistical Evaluation

- **Police Data**
- **EMS Data**
- **Detox Data**
- **Retailer Sales**

Statistical Data

Working with the WSLCB, the SESRC identified relevant evaluation measures for a before and after comparison of the AIA implementation. The following data were obtained

- Monthly police service calls for a variety of situations within the AIA and in the remainder of the city of Tacoma (assault, drunk driver, drunk in public, homicide, liquor in park, mental illness, narcotics, noise complaint, person down, rape, robbery, sex crime, and theft.
- Data on emergency medical service calls both within the AIA and in the remainder of the city of Tacoma.
- Data on the monthly number of admissions to the detoxification facility in the city of Tacoma.
- Tax information on gross sales of retailers with liquor licenses in the AIA.

SESRC staff made statistical comparisons of before and after data on the measures collected.

Results

- Admissions to the Tacoma detoxification facility were averaging 132 cases per month from January 2000 through January 2001. During the period when AIA was implemented, from March 2002 through March 2003, detox admissions were averaging only 104 cases per month. This is a 21% decline in detox admissions.
- Data from the Tacoma Fire Department show that alcohol related EMS incidents within the AIA area have declined by 35% since March 2002.
- Since March 2002, there has been no appreciable increase in police service calls for “drunk in public”, despite a citywide 17% increase in such service calls.
- Since March 2002, police service calls for “liquor in park” have declined by 61%, in comparison to a 19% decline in non-AIA areas of the city.

EMS Data

	A	B
AIA	1036	667
Non-AIA	1198	1380
City Total	2234	2047

Time Periods

A=2/1/2001-2/28/2002
B=3/1/2002-3/31/2003

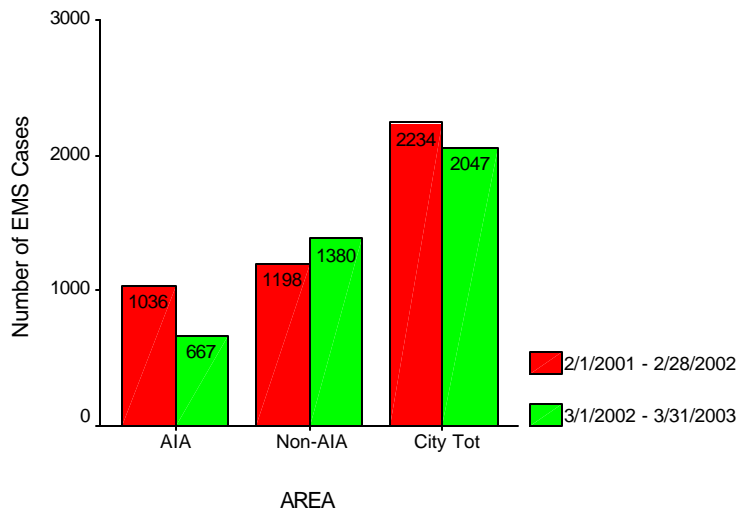
The number of EMS cases have declined by 35% within the AIA, in contrast to a 15% increase in the non-AIA parts of Tacoma.

The average monthly number of admissions to the Tacoma detox facility declined significantly from 132 cases per month prior to AIA implementation, to only 104 cases per month after AIA implementation (from March 2002 through February 2003). The difference is statistically significant (t=7.76 at p < .001).

The Tacoma Fire Department provided information on the number of report of alcohol related EMS incidents in the AIA area, in the non-AIA areas, and in the total citywide area. The data compares the number of EMS incidents in two time periods: February 1, 2001 through February 28, 2002 and March 1, 2002 through March 31, 2003.

Number of EMS Cases

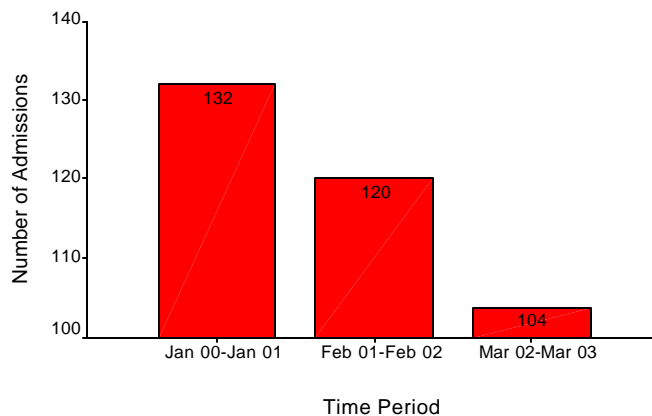
Tacoma AIA, Non-AIA, and City Total



Average Monthly Number of Admissions

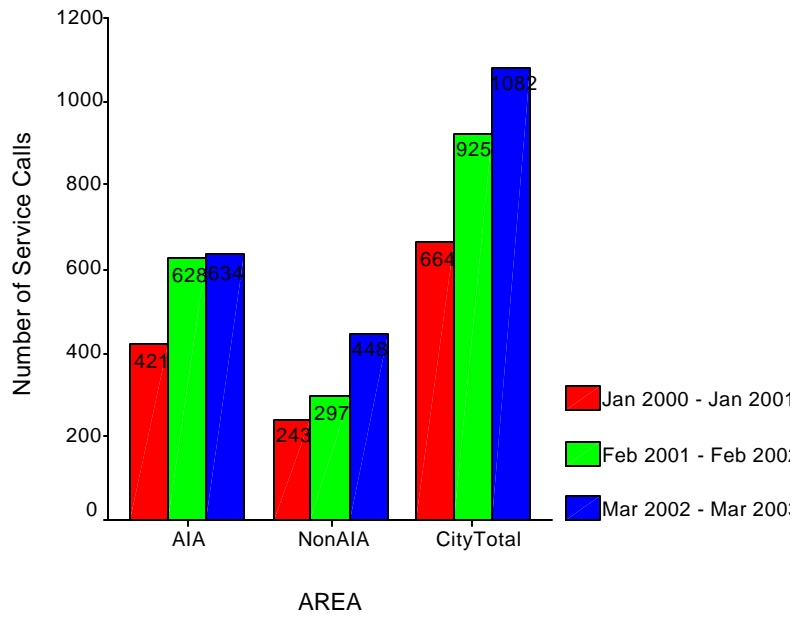
Metropolitan Development Council

Detox Facility



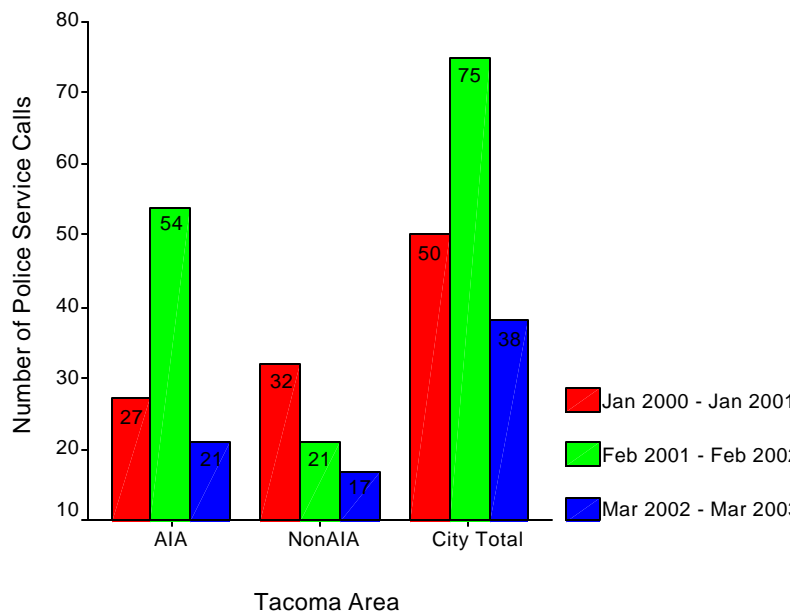
Police service calls for “drunk in public” increased initially during the voluntary period, but since the AIA implementation, they have not increased within the AIA. This is in contrast to non-AIA parts of Tacoma, which have continued to increase at a steady rate.

Police Service Calls for "Drunk in Public"



Police Service Calls for “liquor in park” jumped dramatically during the voluntary pre-AIA period, but showed a dramatic decline during the AIA period, within the AIA part of Tacoma. The non-AIA parts of Tacoma also showed a decline in these police service calls.

Police Service Calls for "Liquor in Park"



Focus Groups:

- **Volunteers**
- **Residents**
- **Retailers**
- **Chronic Public Inebriates**

Focus Groups

The overall purpose of the focus groups was to obtain qualitative information about the effectiveness of the AIA designation. SESRC designed focus groups of the following groups:

- AIA community volunteers
- AIA community residents
- Chronic Public Inebriates at the Tacoma Rescue Mission
- Chronic Public Inebriates at the Detox Center
- Retailers in the AIA

Between 10 and 20 people were recruited for each focus group, with a goal of having at least six but not more than 12 people actually attending each focus group. Community residents and retailers were recruited in their respective surveys.

Chronic Public Inebriates were recruited at each location with the help of staff from the Mission and the Detox Center. To encourage participation, chronic public inebriates were told that they would be given \$5 worth of coupons redeemable for a meal at a local fast food outlet.

The purpose of the focus groups was to identify perceptions of the impact of the AIA, and the restrictions put in place by the AIA. The chronic public inebriate focus groups had an additional objective to obtain information about what changes in behavior that chronic public inebriates have made as a result of the AIA initiative.

All focus groups were conducted between Saturday, May 3rd and Monday, May 5th. The focus groups of community volunteers, community residents, and AIA retailers were held at the Hilltop Action Coalition Office, 1224 S “I” Street in Tacoma. Refreshments were provided, and focus group participants were given a check for \$35 to encourage participation.

Community Volunteers

Focus Groups

- Eleven community volunteers, including neighborhood block leaders and members of neighborhood associations, participated in this focus group session.
- Community volunteers reported a significant decrease in the number of bottles and cans and other street trash that is picked up. Before AIA implementation volunteers used to fill 2 to 3 gallon trash bags with discarded beer and wine bottles. Now, they rarely find empty bottles.
- Community volunteers reported less panhandling, and less evidence of chronic public inebriates in the area. Overall, community volunteers felt that the AIA policy has significantly reduced the problem of chronic public inebriates in their community.
- A concern was expressed that youth may view homelessness as appealing, and that some people have seen young people hanging out with chronic public inebriates on weekends. Young people have also been seen asking chronic public inebriates to buy alcohol for them. However, some said that since the AIA, they have seen fewer young people hanging out with homeless people.
- Only three of 12 people invited to this focus group attended (an additional participant had car trouble and arrived at the conclusion of the focus group session).
- None of the community residents attending the focus group were aware of the AIA policy. While some mentioned seeing improvements in the urban core areas of Tacoma, none could attribute the changes to the AIA policy.
- All community residents in the focus group mentioned seeing less trash and litter on the streets. Some also mentioned feeling safer, especially in the parks, where there seem to be fewer transients.
- Some community residents suggested that it would be a good idea to expand the AIA policy to the entire city of Tacoma.

Community Residents

Chronic Public Inebriates

- One focus group of chronic public inebriates was held in the cafeteria of the Tacoma Rescue Mission with nine self-identified chronic public inebriates.
- When asked if they were currently drinking, most said no but that when they do drink, they said they tend to go on binges, and continue drinking until they have no more money.
- A second approach to getting information from chronic public inebriates was attempted at a location near the Metropolitan Development Council Detox Facility. A table and folding chairs were placed at this location and snacks were offered to people who would agree to stop and talk with us about the problem of alcohol and drinking.
- When asked how they decide what to drink, chronic public inebriates said they learn much by word of mouth from other chronic public inebriates. Lowest price, highest alcohol content, and largest size of bottle are the primary factors determining what products chronic public inebriates buy.
- Chronic public inebriate participants in the focus group were aware of the AIA, having heard about the restrictions from the stores, and believe that it is somewhat effective. One chronic public inebriate said that he wouldn't patronize stores that increased their beer prices by as little as 30 cents. Most said that the AIA restrictions led to some chronic public inebriates leaving the area.
- Chronic public inebriates expressed the view that the AIA restrictions have led to inebriate going outside the area to get the alcohol they want, and to an increase in drinking on busses. They also said that they no longer see some of the inebriates they used to hang out with because they have left the area.
- The participating chronic public inebriates admitted that panhandling is a main source of money for alcohol. However, some of the younger inebriates will work to get enough money to go on binges. When asked, inebriates say that they will tend to buy one beer at a time, as often as they can get enough money to do so.

Retailers

- Seven retailers attended this focus group session. Of these, four were convenience store owners, two were tavern owners, and one owned a grocery store.
- The convenience store owners all claimed to have lost money as a result of the AIA restrictions, some by as much as 35%. This is in contrast to the grocery store owner and the tavern owners who said they had been less affected, and have not lost any revenue.
- While the convenience stores owners felt that the AIA restrictions were not fair to them, they did feel that the restrictions were helping to deal with the problem of chronic public inebriation. They said that to be fair the restrictions should be applied more broadly to include all of the city of Tacoma.
- While some owners admitted that the AIA restrictions were beneficial in dealing with the problem of chronic public inebriation, they felt that it didn't go far enough, because inebriates can easily go outside the area to get the alcohol products they want.
- Some owners expressed concerns that there are too many stores in a small area, and that part of the problem is that new stores are allowed to establish themselves nearby existing stores, which increases pressures on all stores to sell products to chronic public inebriates.
- Retailers admitted that they would prefer that chronic public inebriates not hang around their stores. The grocery store owner mentioned a zero tolerance policy on chronic public inebriates buying alcohol and hanging around. However, the convenience store owners said that sales to chronic public inebriates make up as much as 10% to 30% of their business.
- In a concluding question about how the retailers felt about the restrictions imposed by the AIA, three said that it created a financial hardship for them, three said it had no substantial effect on their business, and one thought it has had an overall positive effect.

Analysis of Retail Sales Data

There are 50 retail establishments in the AIA area that have liquor licenses to sell alcohol “to go” and there are another 4 such retailers within five blocks of the AIA. We obtained access to tax records for these establishments for each month from January 2001 through March 2003. We analyzed these data by grouping retailers by category (convenience stores, taverns, grocery stores, and gas-station minimarts). This was done to create homogeneous groups with similar gross sales amounts. We then created two consecutive time periods with 12 months in each period. We compared average monthly gross sales in the two time periods, before AIA implementation (March 2001 through February 2002) and during AIA implementation (March 2002 through February 2003).

Complete data was available for only some retailers. These 43 retailers base the analysis presented in the following pages on the gross sales data reported.

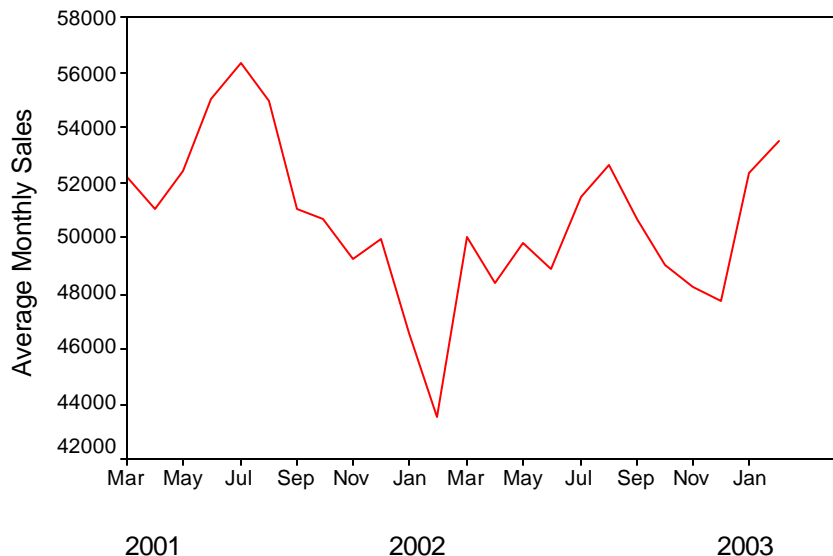
Of the 43 retailers in the AIA, 28 were categorized as “convenience stores” with less than \$125,000 in gross sales per month. The chart below shows the average monthly gross sales for all 25 convenience stores during each month from March 2001 through February 2003.

The monthly average gross sales for convenience stores in the AIA was \$51,104 in the pre-AIA period, and \$50,584 in the post-AIA period. This difference is not statistically significant.

No statistically significant change in monthly sales at convenience stores in the AIA.

Convenience Stores Sales - Tacoma AIA

March 2001 through February 2003



Taverns

Of the 43 retailers in the AIA, 5 were categorized as “taverns” based on their trade name. The monthly average gross sales for these five taverns in the AIA was \$35,971 in the pre-AIA period, and \$33,151 in the post-AIA period. This difference is statistically significant ($t=3.22$, $p < .01$).

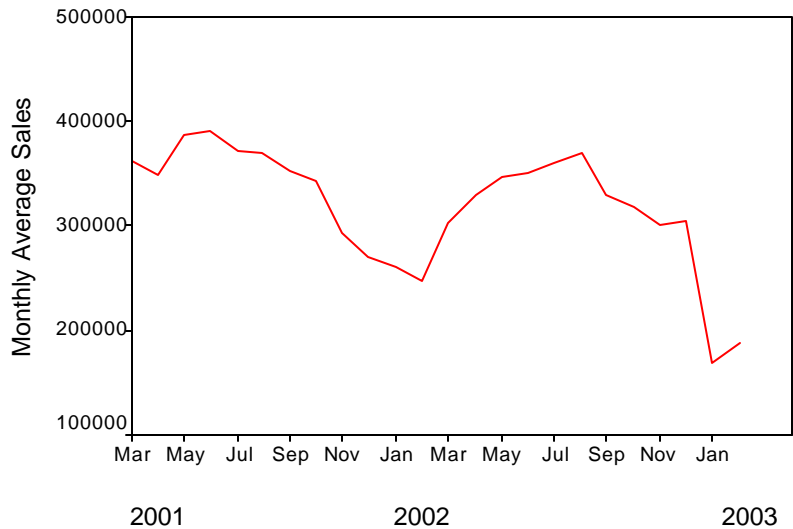
Gas Station Minimarts

Of the 43 retailers in the AIA, there are four gas station minimarts, categorized with monthly gross sales exceeding \$125,000. The chart below shows the average monthly gross sales for all 4 minimarts during each month from March 2001 through February 2003.

The monthly average gross sales for these four minimarts in the AIA was \$333,650 in the pre-AIA period, and \$305,752 in the post-AIA period. This is a difference of over \$27,897 per month, which is not statistically significant.

Gas Station Minimart Sales - Tacoma AIA

March 2001 through February 2003



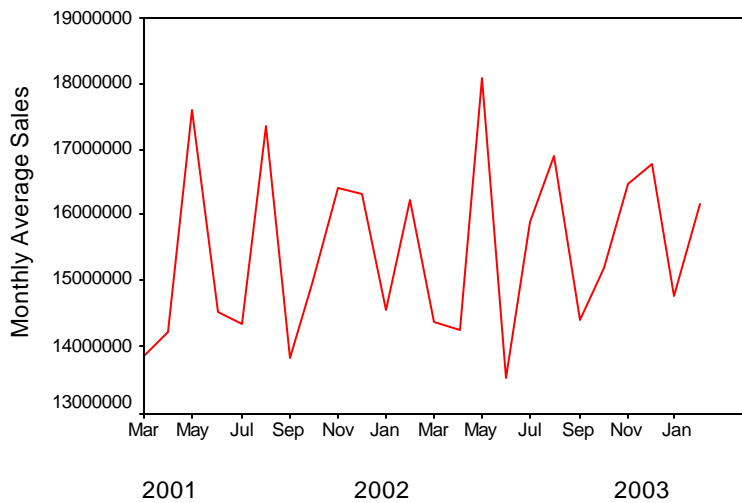
Grocery Stores

Of the 43 retailers in the AIA, there are six categorized as grocery stores with monthly gross sales exceeding \$325,000. The chart below shows the average monthly gross sales for all 6 grocery stores during each month from March 2001 through February 2003.

The monthly average gross sales for these six grocery stores in the AIA was \$15,359,000 in the pre-AIA period, and \$15,575,000 in the post-AIA period. This is a negligible difference per month, which is not statistically significant.

Grocery Store Sales - Tacoma AIA

March 2001 through February 2003



Retail sales figures in the AIA do not show a systematic pattern that can be directly linked to the AIA implementation. Overall, of the 43 retail establishments for which we had gross sales information, 23 showed declines in sales revenue between the pre-AIA and post-AIA periods, and 20 showed increases. Among the 28 convenience stores, 15 showed declines in sales revenue, and 13 showed increases. Among grocery stores, 2 showed declines in sales revenue, and 4 showed increases. Among gas station minimarts, two showed declines in sales, and two showed increases.

Only 19 of the 54 retailers that were sent questionnaires, responded to the survey. To see if the respondents were different from the nonrespondents we compared the monthly sales revenues for the two groups. In general, those who responded to the survey were the smaller retailers, versus the nonrespondents who tended to be the larger retailers. This is fairly common in surveys of businesses, since in larger businesses it is difficult to get the questionnaire into the hands of the appropriate person.

The average monthly sales for the responding businesses during the pre-AIA time period was \$52,416 versus \$51,026 for the post-AIA time period. This difference of \$1,389 is not statistically significant. The average monthly sales for the nonresponding businesses during the pre-AIA time period was \$3,733,000 versus \$3,504,000 for the post-AIA time period. This difference was also not statistically significant.

Retail Sales Data

- There is little evidence of systematic changes in retail sales between the pre-AIA and the post-AIA time period that can be attributed to the AIA policy.
- Of 43 retail establishments for which sales data are available, 23 show declines between the pre and the post AIA periods, while 20 retailers show increases.
- While there is a small difference (\$859 per month lower post-AIA) between pre-AIA and post-AIA average monthly sales for convenience stores, the difference is not statistically significant.

Summary of Evaluation Results

- The consensus of public opinion is that the problem of chronic public inebriation has remained about the same as it was two years ago. However, among community residents in the AIA, 25% say that the problem has decreased. Among AIA retailers, 20% say that the problem has decreased. And, among people working in the AIA, 18% say the problem of chronic public inebriation has decreased.
- Detox admissions have declined from an average of 134 per month in 2000 to only 104 per month during the time that the AIA restrictions have been in effect. Similarly, alcohol related EMS incidents have declined by 35% during that time.
- Since March 2002, in the AIA there has been a 1% increase in police service calls for “drunk in public” in comparison to an increase of 51% in such calls in the non-AIA parts of the city.
- Since March 2002, in the AIA there has been a 61% decrease in police service calls for “liquor in park” in comparison to an decrease of 19% in such calls in the non-AIA parts of the city.
- No similar changes are observed in police service calls for other situations including “theft” and “drunk driving,” with the exception of “narcotics,” which also shows a significant decrease since March 2002.
- Beer and wine distributors do not like the AIA restrictions, and while some report that their revenues are down because of the restrictions, there is no available evidence of this. The little data that is available shows an increase in revenues rather than a decrease during the time that the AIA restrictions have been in place.
- Sales revenues for retailers with liquor licenses in the AIA do not show a systematic change as a result of the AIA implementation. Of 43 retail establishments, 23 showed declines in sales revenue from pre-AIA to post-AIA time periods, and 20 showed increases.

**Fewer Chronic
Public Inebriates
and problems**

Here we present some of the possible outcomes as a result of the AIA, and describe the evaluation results for each of these outcomes.

22% of survey respondents living within the AIA said that the number of persons drinking alcohol in public in their neighborhood has **decreased** compared with two years ago. Similarly, 26% of retailers in the AIA said that the number of persons drinking alcohol in public in their neighborhood has **decreased** during the past two years. In comparison, fewer than 10% of people living outside the AIA or on the boundaries of the AIA, say that the number of persons drinking alcohol in public in their neighborhood has decreased.

25% of survey respondents living within the AIA said that the problem of chronic public inebriation has **decreased** compared with two years ago. Similarly, 21% of retailers in the AIA said that the problem has **decreased** during the past two years. In comparison, only 7% of people living outside the AIA or on the boundaries of the AIA, say that the problem has decreased.

Almost 19% of people living within the AIA said that they now, as compared with two years ago, the number of persons urinating or defecating in public places in their neighborhood has **decreased**. This compares with only 8% of people living outside the AIA or on the boundaries who feel this way.

Over 28% of people living within the AIA said that they now, as compared with two years ago, the number of persons panhandling in their neighborhood has **decreased**. This compares with only 11% of people living outside the AIA or on the boundaries who feel this way.

Almost 16% of people living within the AIA said that the regular chronic public inebriates in their neighborhood are now **less often intoxicated** as compared with two years ago. 26% of retailers in the AIA said that the regular chronic public inebriates in their neighborhood are now **less often intoxicated** as compared with two years ago. In comparison, only 8% of people living outside the AIA or on the boundaries of the AIA said that the inebriates in their neighborhood are now less often intoxicated.

Less trash and litter from Chronic Public Inebriates

**Reduced
intoxication levels
among Chronic
Public Inebriates**

There isn't a whole lot of trash as opposed to a few years ago."

"Used to find liquor bottles in her bushes, and she doesn't see that anymore."

Fewer incidents of public drunkenness

"You don't see as many people just sitting there in the parking lots or in the park with a bag in their hands. The Wright park is by where she lives and they send more cops by there recently patrolling."

Almost 31% of people living with the AIA said that, compared with two years ago, the amount of trash and litter due to chronic public inebriation in their neighborhood has **decreased**, and 36% said that the overall cleanliness of their neighborhood has **increased**. Similarly, 31% of retailers in the AIA said that the amount of trash and litter due to chronic public inebriation in their neighborhood has **decreased**, and 31% said that the overall cleanliness of their neighborhood has **increased**. In comparison, fewer than 10% of people outside the AIA said that the amount of trash and litter due to chronic public inebriation in their neighborhood has **decreased**, but 32% said that the overall cleanliness of their neighborhood has **increased**.

Community volunteers report a significant decrease in the number of bottles and cans and other street trash that is being picked up. Before AIA implementation volunteers used to fill three gallon trash bags with discarded beer and wine bottles. Now, they usually only fill one bag and they report finding many fewer empty bottles.

In the 13 months prior to the AIA, there were 628 police service calls for "drunk in public" within the AIA and 634 such calls in the 13 months after the AIA policy began. **This is less than a one percent difference within the AIA.**

Outside the AIA, in the 13 months prior to the AIA there were only 297 police service calls for "drunk in public." In the 13 months after the AIA policy began, the number of such police service calls had increased to 448 in the parts of Tacoma that are outside the AIA. **This is a 50% increase.**

Thus, while there was no reduction in these "drunk in public" police service calls in the AIA, there was also no increase as was seen in other parts of Tacoma.

In the 13 months prior to the AIA, there were 54 police service calls for "liquor in park" within the AIA and 21 such calls in the 13 months after the AIA policy began. **This is a 61% decrease within the AIA.** Outside the AIA, in the 13 months prior to the AIA there were only 21 police service calls for "liquor in park." In the 13 months after the AIA policy began, the number of such police service calls had declined to 17 in the parts of Tacoma that are outside the AIA. **This is a 19% decrease.**

Thus, there was a greater reduction in these "liquor in park" police service calls in the AIA, than there was in other parts of Tacoma.

Fewer alcohol related problems

Community residents who feel safer and better about their neighborhood

“Sees a better, safer place, where things are trying to improve, so things are getting there. They are not there yet, but it is better.”

In the 13 months prior to the AIA, there were 1036 alcohol related Emergency Medical Service (EMS) incidents within the AIA and 667 such incidents in the 13 months after the AIA policy began. **This is a 35% decrease within the AIA** Outside the AIA, in the 13 months prior to the AIA there were 1,198 alcohol related EMS incidents. In the 13 months after the AIA policy began, the number of such incidents had increased to 1380 in the parts of Tacoma that are outside the AIA. **This is a 15% increase.**

Detox admissions were averaging 132 cases per month from January 2000 through January 2001. During the period when AIA was implemented, from March 2002 through March 2003, detox admissions were averaging only 104 cases per month. **This is a 21% decline in detox admissions.**

Over 25% of people living within the AIA said that compared with two years ago, nowadays they feel **more safe** in their neighborhood. 19% of people living outside the AIA or on the boundaries said they feel more safe nowadays. However, only 5% of the AIA retailers said that they feel more safe nowadays. However, only 10% of AIA retailers said that they feel less safe nowadays.

Almost 45% of people living within the AIA said that over the past two years their neighborhood has changed **for the better**, and only 8% said for the worse. Almost 35% of people living outside the AIA or on the boundaries said that their neighborhood has changed **for the better**, and only 3% said that it has changed for the worse. Among AIA retailers, almost 17% said that over the past two years their neighborhood has changed **for the better**, but almost 28% said that it has changed **for the worse**.

Community volunteers report less panhandling, and less evidence of chronic public inebriates in the AIA area. Community volunteers feel better about their neighborhood and felt that the AIA policy has significantly reduced the problem of chronic public inebriation in their community.

Crime and drug activity remain as problems for residents as both people living within the AIA and those outside or on the boundaries were almost equally likely to say that crime and drug have decreased as have increased. 24% of people in the AIA said that crime has increased, versus 19% who say it has decreased. Also, 25% of people in the AIA said that drug activity has increased, versus 24% who said that it has decreased.

Other outcomes

“They're not hanging around the places. One of the local stores doesn't sell cheap alcohol anymore.”

They don't allow people hanging out outside drunk. it's enforced heavily.”

Most stores don't allow panhandlers to hang outside.”

Three of five beer and wine distributors contacted reported that their sales within the AIA area have decreased, one by as much as 16%. However, two distributors reported an increase in sales within the AIA since the AIA restrictions went into effect. All were asked to provide sales data to support these statements, but only one anonymous beer and wine distributor was able to do so. Comparing the sales data for the pre-AIA and post-AIA time periods, for this distributor shows a 19% increase in alcohol sales within the AIA after the AIA restrictions went into effect.

The three distributors who serve the retailers with liquor licenses located within five blocks outside the AIA boundaries, reported no changes in sales to these retailers. Two distributors reported an increase in sales.

There is little evidence of any systematic changes in sales revenue for retailers with liquor licenses located within the AIA between the pre-AIA and the post-AIA time period. Of 43 retail establishments for which sales data are available, 23 show declines between the pre and the post AIA periods, while 20 retailers show increases.

We also separately analyzed the sales revenues of convenience stores with liquor licenses located within the AIA. We found a small difference (\$859 per month lower post-AIA) between pre-AIA and post-AIA average monthly sales for convenience stores, however the difference was not statistically significant.

We also analyzed the sales revenue data for two retailers located just outside the AIA boundary. We found significant differences between pre-AIA and post-AIA monthly sales revenues for both store. However, consistent with what the beer and wine distributors told us, the results are mixed, with sales for one retailer showing an increase between the two time periods, and sales for the other retailer showing a decrease.

In general, we could find no evidence that the AIA restrictions had significantly negatively affected the sales revenues of retailers with liquor licenses within the AIA.

Conclusions

Conclusions

The evaluation results suggest that the AIA has been effective at achieving most of the goals of dealing with the problem of chronic public inebriation. Some of the results are quite strong, especially the reductions in police service calls within the AIA, the decreases in alcohol related EMS incidents, and detox admissions, and the public perceptions of changes in problems with chronic public inebriation.

However, the evaluation of the AIA policy occurred after the fact, and within the context of substantial public sentiment in favor of the AIA restrictions as a way to deal with the problem of chronic public inebriation. This means that in addition to the AIA restrictions on “to go” sales of specific alcohol products, there were also a number of other things happening to deal with the problem of chronic public inebriation. Some of these things include the following:

- Volunteer efforts to clean up street litter
- Volunteer efforts to get neighborhood retailers to restrict sales of alcohol products to inebriates
- Increased police participation in efforts to deal with the problem of chronic public inebriation
- Downtown Tacoma urban revitalization efforts.
- An increase in the provision of services for chronic public inebriates, including construction of a new Tacoma Rescue Mission.

While the evaluation finds several indicators of changes in the Tacoma AIA, it is not possible to conclude that all the changes are due solely to the AIA policy itself. It is possible that some of these changes may have occurred even without the AIA policy. However, it is also probable that the AIA restrictions are just one aspect of an entire community wide effort to deal with chronic public inebriation, and that putting these restrictions in place resulted in strengthening these community wide efforts and giving others more motivation to deal with the problem of chronic public inebriation.

Finally, it seems that some chronic public inebriates have left the area because they no longer get the alcohol products they desire in the Tacoma AIA. We know this because the remaining inebriates have told us this, and because the evaluation data support this interpretation.

Recommendations for Future Evaluations

For a true before and after comparison it is necessary to collect public opinion data both before and after a program or policy such as the AIA is implemented. This will help ensure that public perceptions, attitudes, and opinions and changes in these are measured as accurately as possible. A before and after comparison of such data will also make it possible to make causal statements about the effects of a program or policy.

An even stronger evaluation can be realized by adding control or comparison communities that are similar in size and characteristics to the community in which the policy or program is being implemented. An evaluation design that has both a before and after data collection and a comparison community can rule out many of the threats to validity that arise in typical evaluations, and thereby make it much easier to establish cause and effect relationships.

For example, the present evaluation could have been strengthened had surveys been conducted prior to the AIA implementation. The data from these surveys could have then been compared directly with the surveys conducted after the AIA was implemented to determine what changes have resulted. And, if data from comparison communities were available, such as from the cities of Vancouver or Everett, Washington, the evaluation could more readily determine the true effects of the kinds of restrictions imposed by the AIA policy and rules.

References

- Depoy, E. & French-Gilson, S. (2003) Evaluation Practice. Pacific Grove, CA: Brooks/Cole.
- Dillman, Don A. (2000) Mail and Internet Surveys: The Tailored Design Method (2nd Ed.). New York: Wiley.
- Hogan, J. A., Gabrielsen, K. R., Luna, N., & Grothaus, D. (2003) Substance Abuse Prevention: The Intersection of Science and Practice. Boston: Allyn and Bacon.
- Lachman, D. (2003) Personal communication, May 28th briefing document.
- McCleary, R. D. (2000) "Evolution of the time-series experiment," In: L. Bickman (Ed.) Research Design: Donald Campbell's Legacy, Thousand Oaks, CA: Sage Publications.
- Mohr, L. B. (1995) Impact Analysis for Program Evaluation, Thousand Oaks, CA: Sage Publications.
- Posavac, E. J. & Carey, R. G. (1997) Program Evaluation: Methods and Case Studies, Upper Saddle River, NJ: Prentice Hall.
- Rossi, P. H. & Freeman, H. E. (1993) Evaluation: A Systematic Approach (5th Ed.) Newbury Park, CA: Sage Publications.
- Stewart, D. W. & Shamdasani, P. N. (1998) "Focus Group Research: Exploration and Discovery," In: L. Bickman & D. J. Rog (Eds.) Handbook of Applied Social Research Methods, Thousand Oaks, CA: Sage Publications.
- Tarnai, J. (1984) Answers to questions: Extroverted vs introverted alcoholics. Medical Aspects of Human Sexuality, 18, No. 7, 12-13.
- Tarnai, J. and Young, F. A. (1983) The alcoholic's personality: Extrovert or introvert? Psychological Reports, 53, 123-127.
- Tarnai, J., Magnusson-Fagan, N. J., Eichberger, M., Hopkins, R. H. and Mauss, A. L. (1981) On re-tooling the teachers: An evaluation of teacher training in alcohol education. Journal of Alcohol and Drug Education, 27 (Fall), 34-46.
- Mauss, A. L., Hopkins, R. H., Tarnai, J. and Kearney, K. A. (1980) Perils and pot shots in preventive research: A response to Staulcup et al. Journal of Studies on Alcohol, 41, 959-962.
- Rankin, W. L., Tarnai, J., Fagan, N. J., Mauss, A. L. and Hopkins, R. H. (1978) An evaluation of workshops designed to prepare teachers in alcohol education. Journal of Alcohol and Drug Education, 23, 1-13.

Beer and Wine Products Restricted from Off-Premises Sale in Tacoma Alcohol Impact Area (AIA) as of March 1, 2002

(All container sizes, flavors, and alcohol contents are restricted.)

Wine

Boone's*
Boone's Farm ('American Original)*
Cisco
Gino's Premium Blend
MD 20/20
Night Train Express
Richard's Wild Irish Rose
Thunderbird

***New Products added
January 15, 2003**

Beer

Bull Ice
Busch Ice
Colt 45 Ice
Colt 45 Malt Liquor
Hamm's Ice Brewed Ale
Hamm's Ice Brewed Beer
Hurricane Ice Malt Liquor
Keystone Ice
King Cobra Malt Liquor
Lucky Ice Ale Premium
Lucky Ice Beer
Magnum Malt Liquor
Mickey's Iced Brewed Ale
Mickey's Malt Liquor*
Miller High Life Ice
Milwaukee Best Ice
Milwaukee Best Premium Ice Beer
Natural Ice*
Old Milwaukee Ice
Olde English 800
Olympia Ice
Pabst Ice
Rainier Ale
Red Bull Malt Liquor
Red Dog*
Schmidt's Ice
Sparks*
Special 800 Reserve
St. Ide's Liquor and Special Brews
Steel Reserve

Acknowledgements

This evaluation has benefited greatly from the assistance of the following individuals throughout the entire endeavor. We extend our thanks to each of them, and to the many other volunteers, interviewers, and data collection people who helped complete various aspects of this project. We want to give special thanks to those who participated in the surveys and focus groups for this evaluation, including the residents of the city of Tacoma, the people working in the AIA who participated in the web survey, the participants in our focus groups, the AIA retailers, and the beer and wine distributors in the AIA who agreed to talk with us.

Lorraine Lee, Director
Licensing and Regulation
Washington State Liquor Control Board

Greg Hopkins, Community Liaison Officer
City of Tacoma Police Department

Carol Wolfe, City of Tacoma
Economic Development Department - Neighborhood Business District Program

Jeanie Peterson
Director of Community Initiatives
Hilltop Action Coalition, Tacoma

Kim Sauer, Customer Service Coordinator
Washington State Liquor Control Board

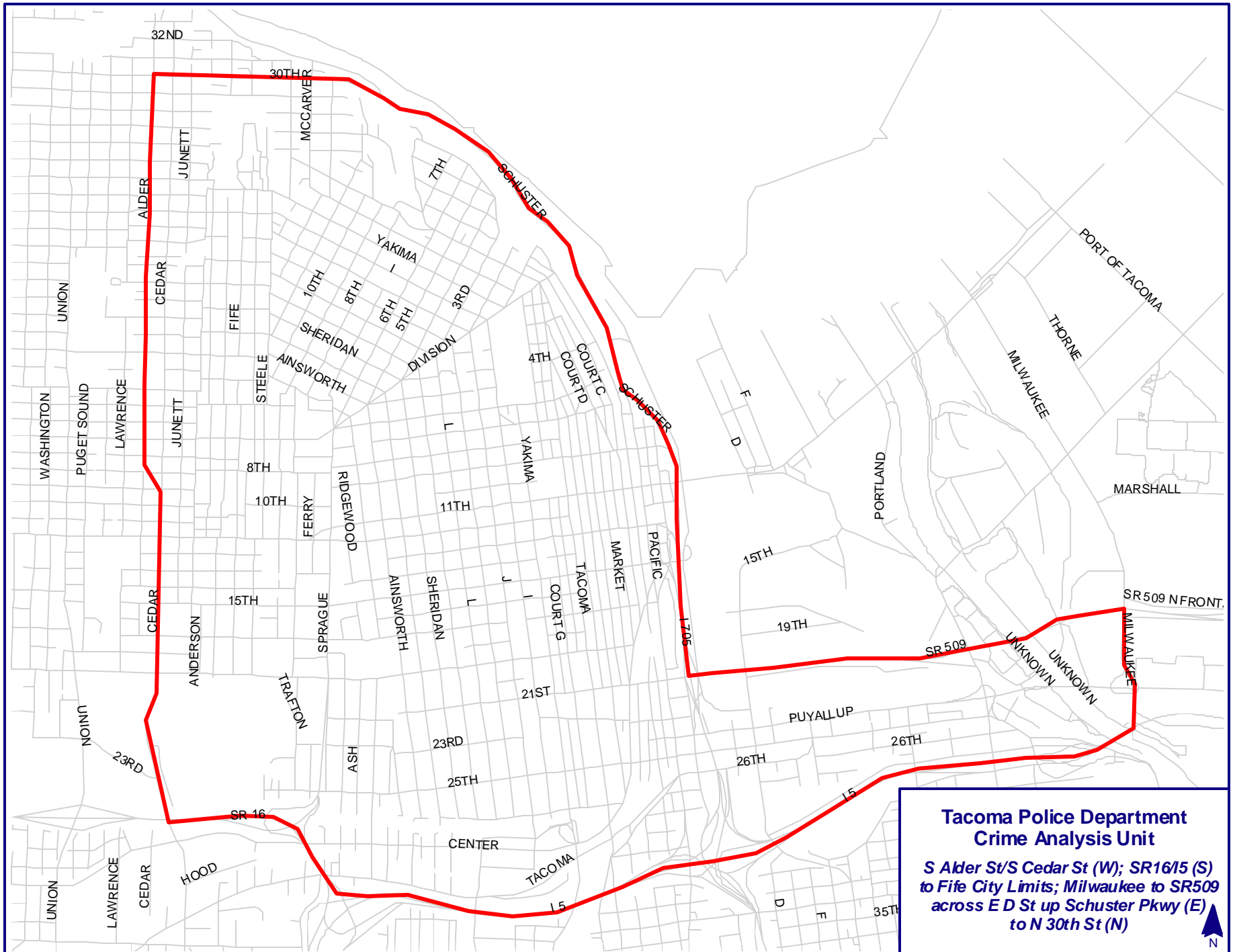
Donald Lachman
Lachman and Laing Public Affairs

Paul Ellis
Tacoma Chamber of Commerce

Mike Lonergan
Tacoma Rescue Mission

Mary DeGruy
Metropolitan Development Council

Doug Swanberg
Metropolitan Development Council



**Tacoma Police Department
Crime Analysis Unit**

*S Alder St/S Cedar St (W); SR16/15 (S)
to Fife City Limits; Milwaukee to SR509
across E D St up Schuster Pkwy (E)
to N 30th St (N)*

