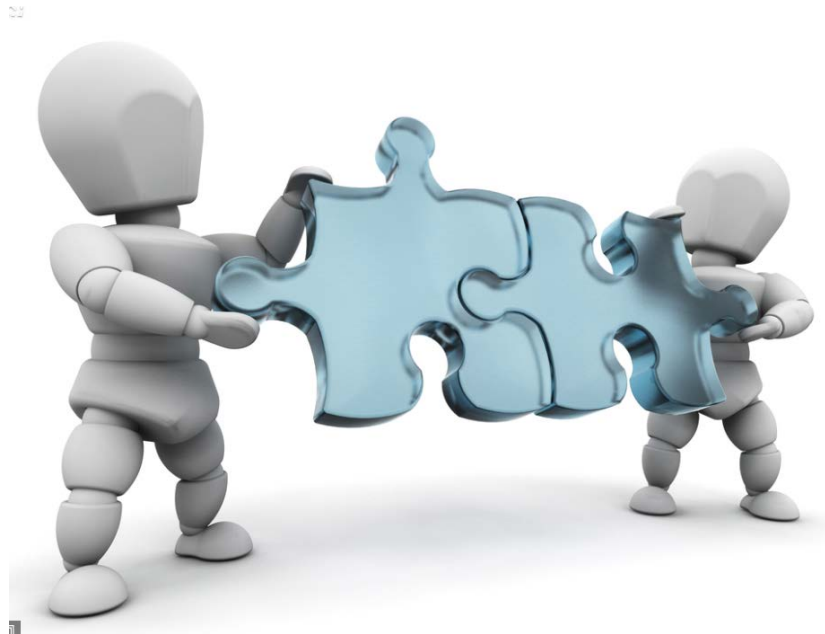




Welcome Traceability Software Integrators



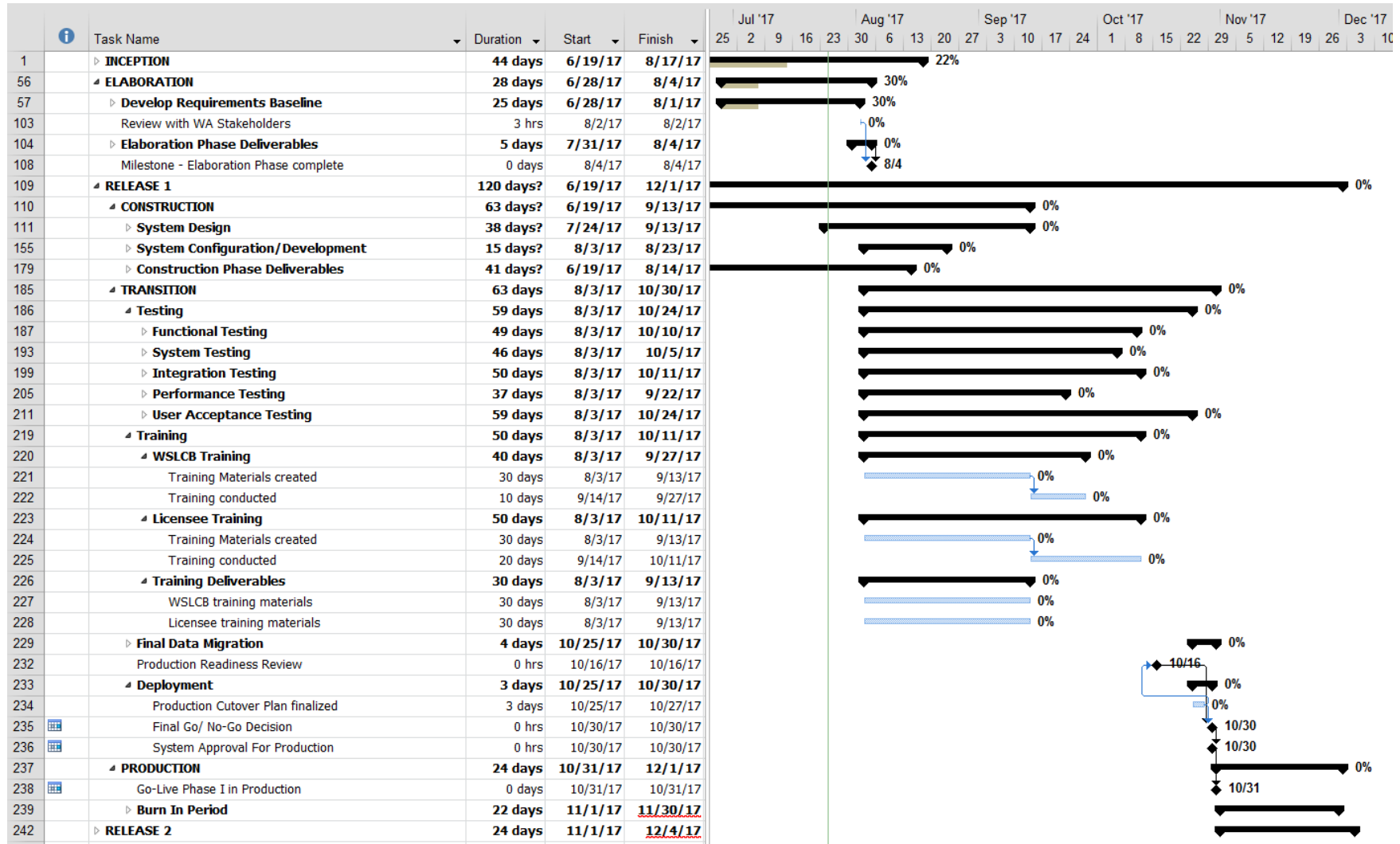


Schedule Strategy

- Release 1
 - Complete support for capturing data
 - State Traceability Web Site
 - Application Programming Interface
 - CSV Interface
 - Partial support for Compliance Reporting
 - Data Conversion
- Release 2
 - Alerts
 - Additional Compliance Reporting
 - Additional Data Conversion



Schedule – Release 1





Communications



“Are you receiving me?”



Communications

Project web page primary conduit for information

- Site updated continuously
- Contains targeted information for licensees and Software Integrators
- Site will facilitate two way exchange of readiness information later in the project
- <http://lcb.wa.gov/marij/mj-traceability-info>



Communications

Do you use a third party software system (i.e. commercial product) to report traceability data?

Yes	571
No	192

Do you anticipate using the new free online system provided by WSLCB to report traceability data?

Yes	520
No	243



Communications

- Do you use a Third Party Product?

If so, what is the name of the product/vendor for your third party system (i.e. commercial product)?

BioTrack	277
GrowFlow	51
GreenBits	145
Mr. Kracken	25
Traceweed	27
WeedTraqr	75
Other (enter information in the comment box below)	30



Communications

Licensee Readiness Indicators

1. Have you received training on the LEAF seed to sale traceability system?

If so, what kind?

- ☐ In-person classes
- ☐ Webinar
- ☐ You-Tube Training videos
- ☐ Other (please specify)

2. Have you accessed the test environment for LEAF and successfully logged in?

- ☐ Yes
- ☐ No

3. Have you completed the relevant compliance script for your licensee type? (e.g. producer; processor; retailer)

- ☐ Yes
- ☐ No

4. What problems have you encountered in the LEAF test environment?

Free Text



Communications

Licensee Readiness Indicators

The following apply if you use Third Party (commercial) software

1. Have you received API credentials for the test system? (needed for 3rd party software integration; disregard question if you are using the free state system for reporting traceability information)

{ } Yes
{ } No

2. Has your 3rd party software vendor successfully uploaded a traceability file in the test environment?

{ } Yes
{ } No

3. Have you (or your vendor) received the “validation successfully completed” message from MJ Freeway?

{ } Yes
{ } No









Communications

Readiness indicator dashboard roll-up*

June 30, 2017

Dashboard

Overall Status	Schedule	Budget	Scope	Risks - 4	Issues - 0
					

For illustration purposes only



Testing



- Washington's Test environment (base Leaf Data Systems) is live
 - 26 integrators have received credentials & accessed the environment
 - The WSLCB Test Environment will not be configured with WA State requirements until early September



Software Integration

- The base code will not be customized for WA requirements initially – there will be ongoing changes to the system and the API through October
- The WA Test environment is where we will release updates as fast as we have them tested so that's where you will see the progression toward the production ready code



Software Integration

- Release notes will be published with each release into the WA Test environment so that 3rd party integrators know what is getting updated
-
- Access API information, code, documents on WA Test environment (URL is posted on lcb.wa.gov)
 - Integrators request credentials & test sites for their business solution (email to MJF: APISupport@leafdatasystems.com)



Software Validation Process

- Integrators will develop against their WA Leaf Data Systems test account
 - We will identify a list of required calls & success criteria for the integrator to be approved, for example:
 - Add a plant
 - Move a plant
 - Harvest a plant
 - Transfer
- Pull logs after required calls have been made
- Evaluate required calls for success
 - Calls contained required data
 - Review for excessive number of calls
- If calls successful then add to approved list – vendor posted to validated lists on MJF and WSLCB websites





Data Conversion Strategy

- LCB has received a commitment from BioTrack to provide a database backup or dump.
- Primary Plan
 - Use the database backup or dump to convert data for all licensees before implementation.
- Backup Plan
 - If LCB is not able to execute conversion for any reason, Licensees will need to create their data after cutover using:
 - State Traceability Web Site
 - CSV File Interface
 - Commercial Software



Communications

We're keeping it fresh - check in regularly:

- <http://lcb.wa.gov/marij/mj-traceability-info>